
Oregon Drinking Water Program Regulatory Update

Dave Emme, Manager

April 2018



(Enter) DEPARTMENT (ALL CAPS)

(Enter) Division or Office (Mixed Case)

Outline

- Year 1 in Review
 - Portland issues
 - Lead in Schools
 - Seismic planning
 - Program capacity
- Looking Ahead
 - Federal Landscape
 - Sustainable resources
 - Emerging contaminants
 - Program issues

Portland's Uniqueness



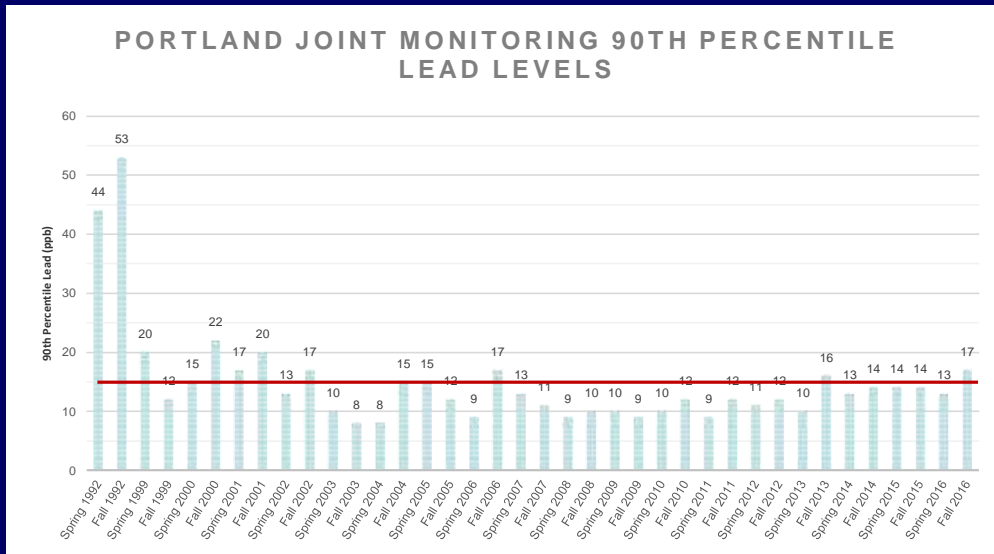
- Commissioner form of City Government
- Highly engaged citizens
- Drinking water
 - Near pristine source
 - Unfiltered
 - Variance from Crypto treatment
 - LCR optimization by Lead Hazard Reduction Plan

Portland's Uniqueness--Crypto



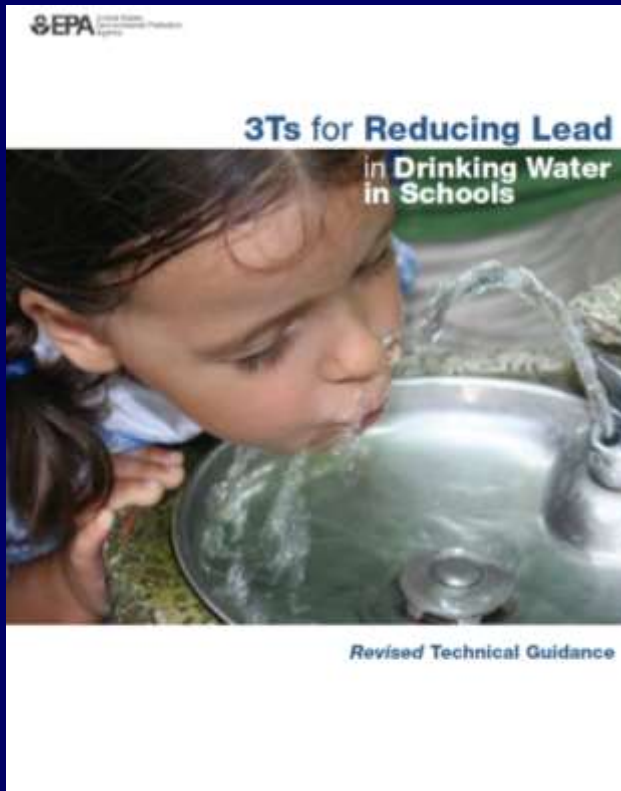
- Variance granted in 2012 based on prior monitoring, watershed protections.
- Detections in early 2017 made it infeasible to comply.
- Revocation order issued in May 2017.
- City decides on filtration over UV treatment.
- Bilateral Compliance Agreement in December 2017.

Portland's Uniqueness--Lead



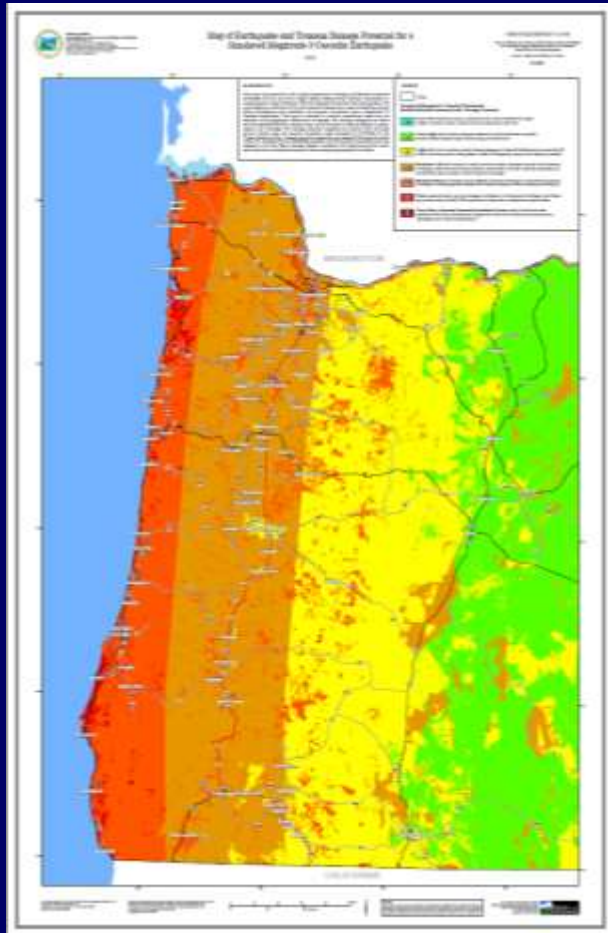
- 1985 ban on lead solder and lead in plumbing. Known pigtailed removed by 1998.
- Optimized through Lead Hazard Reduction Plan since 1997.
- 2017 agreement to improve corrosion control.
 - Bench and pilot studies
 - CCTx by 2022

Reducing exposure to Lead in Schools



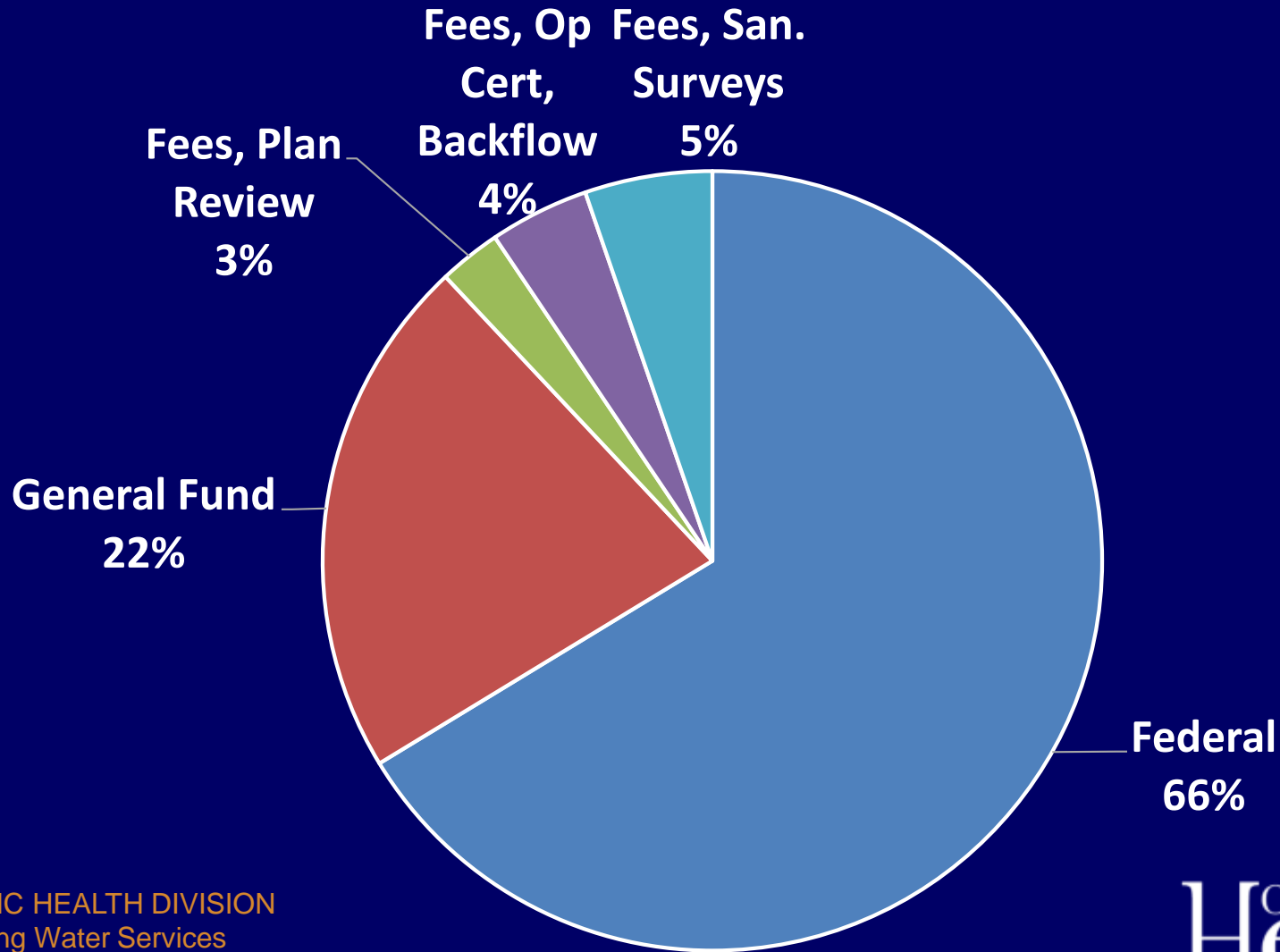
- Governor directed Early Learning Division to adopt rules for Child Care centers
 - Initial monitoring by Sept 30, 2018
 - EPA 3Ts with 15 ppb Action Level
 - Sampling every 6 yrs
- OR Dept of Ed working on similar rules for K-12, as required by SB1062

Getting ready for Cascadia

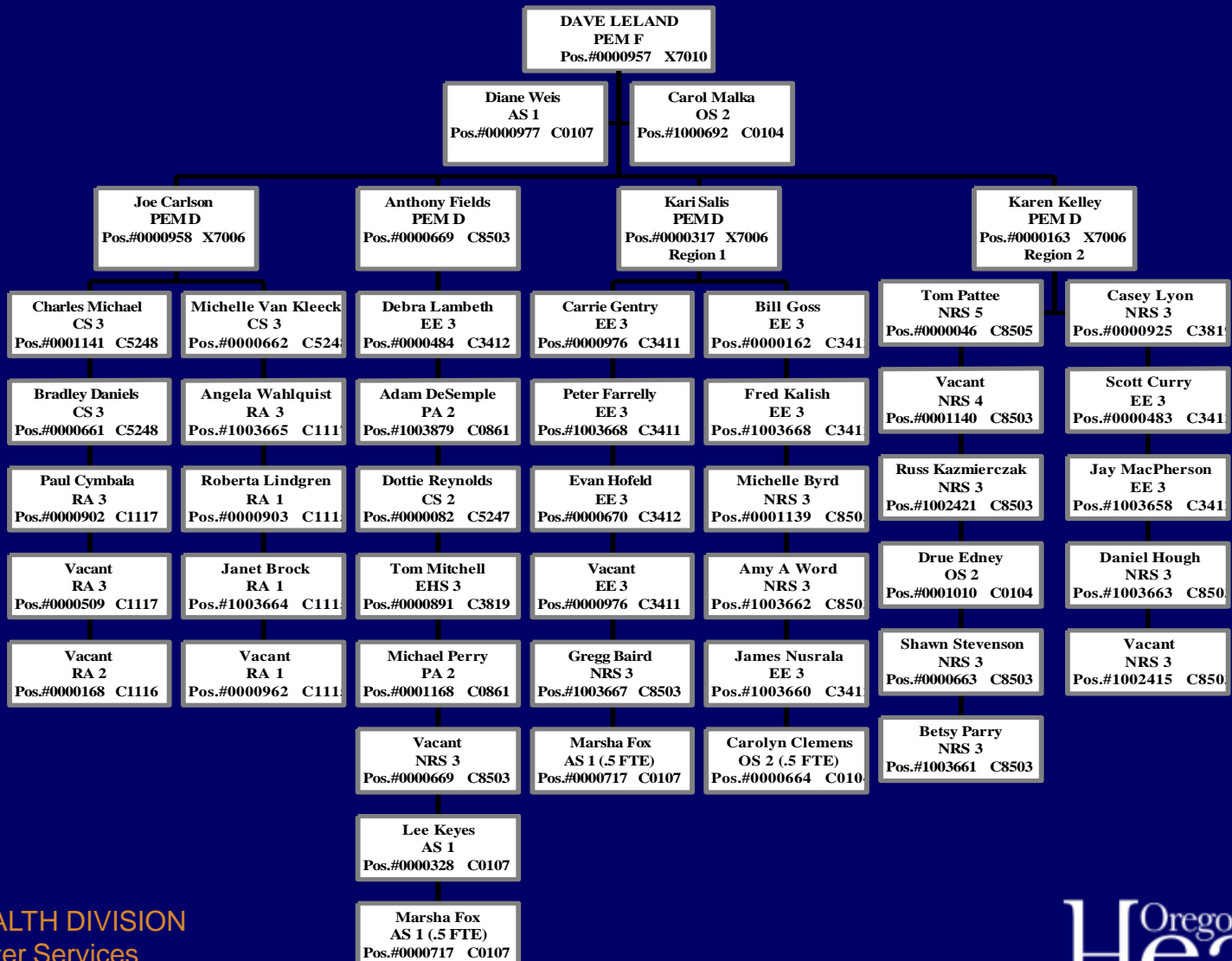


- OR Cascadia Resilience Plan adopted in 2013.
- Rule effective January 2018. Applies to PWSs subject to Master Plan (>300 conn.) and in High to Moderate risk zones.
 - Seismic risk assessment to evaluate backbone system to serve critical community needs.
 - Mitigation plan to identify projects to upgrade the backbone system over a 50 yr period.

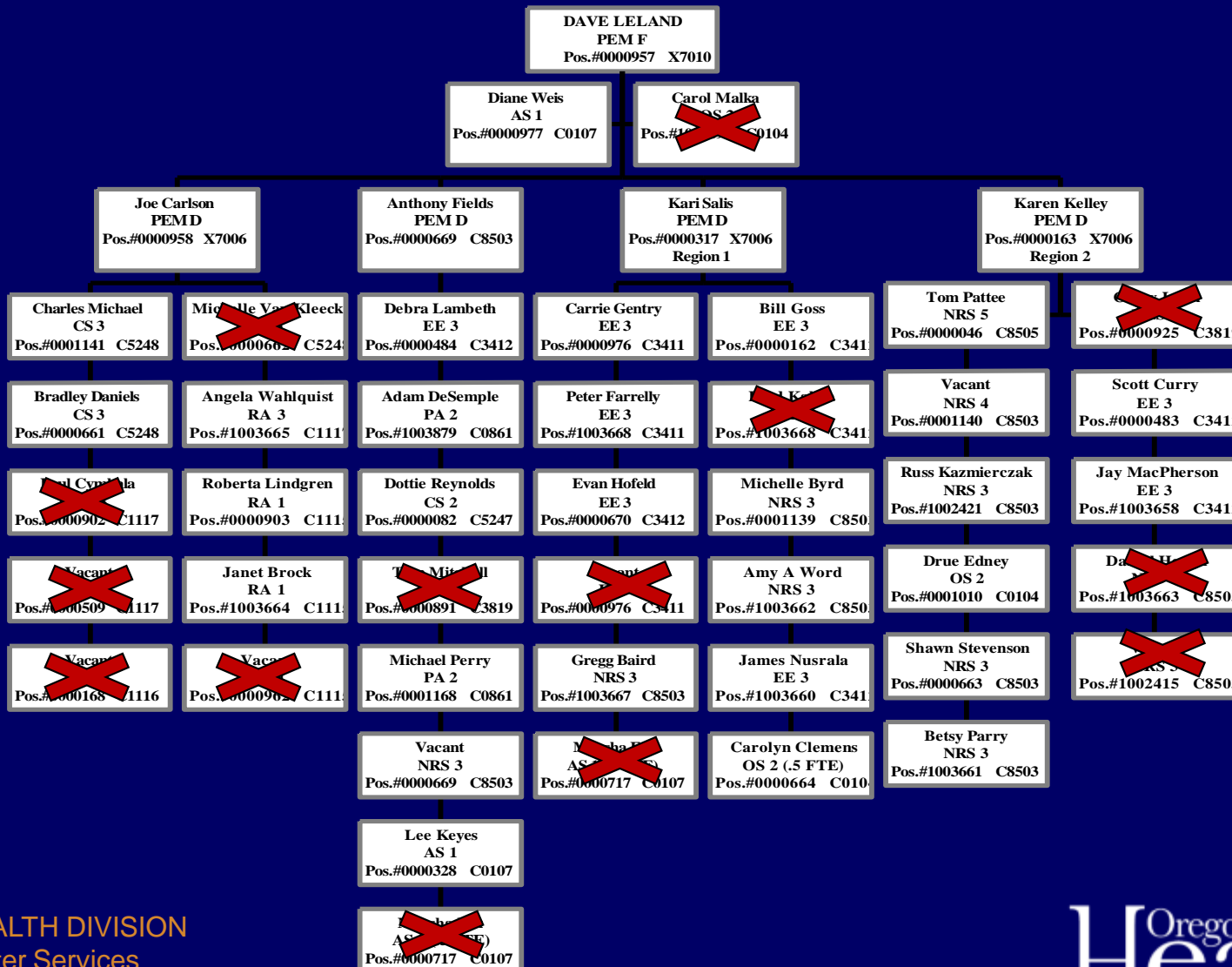
Program Revenue Sources FY17-19



Drinking Water Program 2011 (48 FTEs)

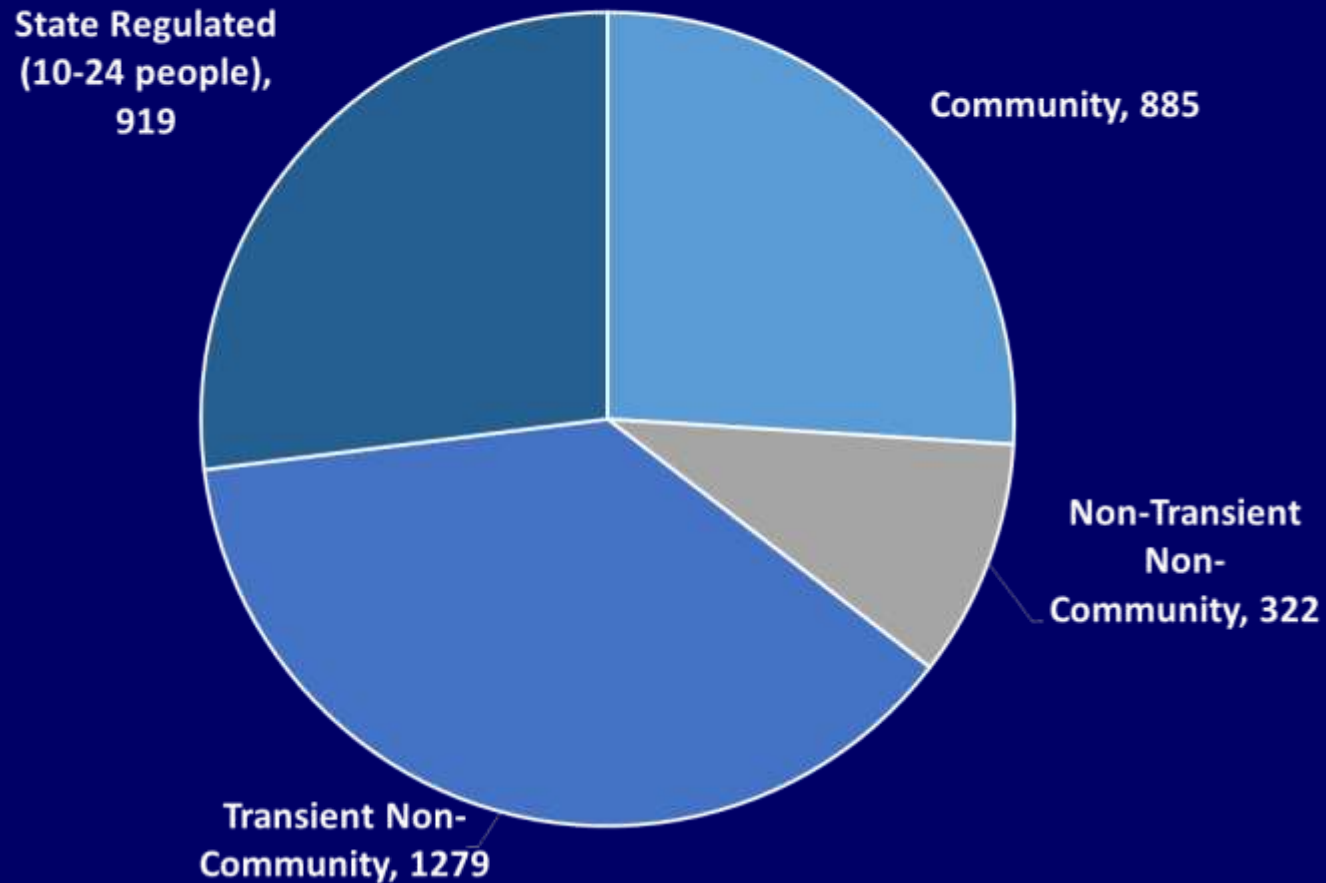


Drinking Water Program 2017 (34 FTEs)



Oregon water systems by type

3,405 Public Water Systems



Impacts of reduced staffing



- Unable to regulate Non-EPA systems.
- Data entry backlogs
- Compliance schedules overdue
- Limited capacity for:
 - Tech review
 - Emergency preparedness planning
 - Program planning and process improvement

Stabilizing staff levels near term

DWSRF Capitalization Grants	
Set-asides 31%	4% DWSRF Admin.
	2% Tech Assist. Small Systems
	10% State Program Mgt
	15% Local Assistance Source protection grants Source water protection Capacity Development
Loans 69%	Loans

- EPA allows states to apply historically unused set-aside authority to new SRF cap grants.
- Oregon took \$750K of banked set-asides in FY17 SRF grant to fill gap and stabilize staffing.
- Unsustainable over the long term.

Looking Ahead

Federal Landscape



- Administration focused on deregulation and cutting government spending.
- EPA Administrator
 - “War on Lead”
 - Leveraging infrastructure investment
 - LEAN focus on improving compliance.
 - Reduce # of systems not meeting stds by 25%

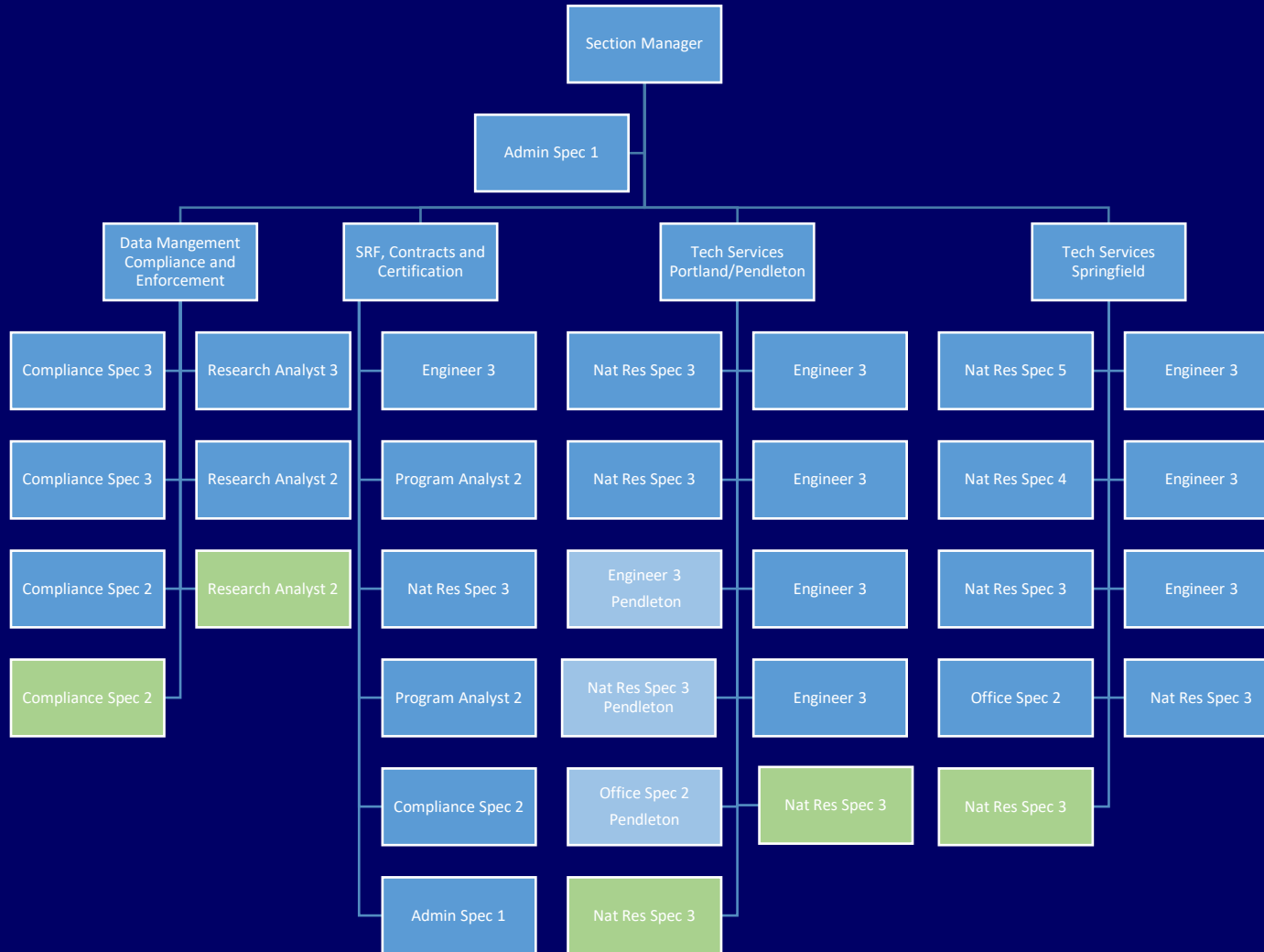
Sustainable State Program Resources



2019 Legislative Concept. Revise or replace the Survey Fee.
Options:

1. Modify and broaden the Survey Fee, include cost of WQ data mgt.
2. Replace Survey Fee with a Flat Fee on Connections.
3. Replace the Survey Fee with Sliding Scale Fee on Connections.

Drinking Water Program 2019 (39 FTEs)



Emerging Rules and Contaminants

Lead and Copper Rule revisions

- What will be the impact?

Unregulated Contaminants.

- Harmful Algal Blooms
 - Is guidance sufficient?
- Legionella
 - What is the role of DW regulators and water utilities?
- Perfluorinated Compounds (PFOA/PFOS)
 - Not found in drinking water systems in UCMR 3 in Oregon.
 - Were detection limits low enough, looking in the right places?

Program Issues Ahead

Increasing compliance with health based standards

- Can we apply a health equity lens to ensure safe water for everyone?

Evaluation of surface water filtration systems

- Reevaluating some membrane systems. Further optimization work.

Source water protection

- Can we use assessments to help prioritize resources?

Operator certification program review

- Is the program creating barriers to entry in the field or advancement?

Working together to keep drinking water safe for all Oregonians.



David.H.Emme@state.or.us

PUBLIC HEALTH DIVISION
Drinking Water Services

Oregon
Health
Authority