

Source Water Protection in the Rogue River Basin

PNWS-AWWA Annual Conference, May 2019
Craig Harper, Medford Water Commission



Healthy Watersheds = Clean Water and Lower Treatment Costs



Presentation Overview

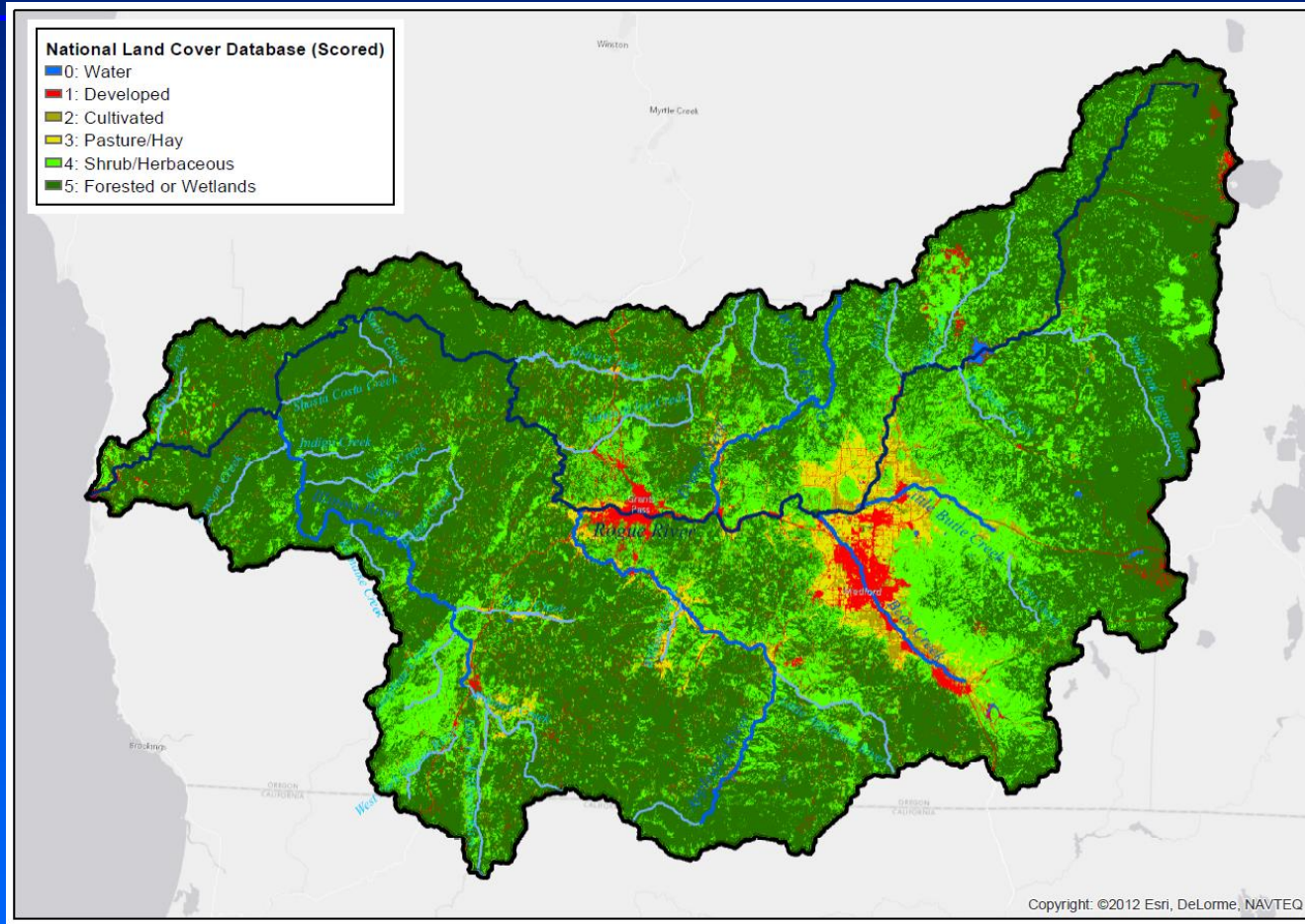
- ◆ Drinking water sources in the Rogue Basin
- ◆ Rogue Drinking Water Partnership
- ◆ Water quality conditions and challenges
- ◆ Measures used to protect drinking water
- ◆ The future of drinking water protection in the Rogue Basin

Drinking Water Sources

- 💧 Our watershed
- 💧 Our partners



Rogue River Basin



Largely undeveloped watershed – makes our work easier.

MWC Sources of Supply



Formation of Rogue Basin Partnership

1. Coordinate and Partner with Drinking Water Providers, Community Stakeholders, Landowners and Agencies
2. Enhance DEQ Source Water Assessments, e.g., intensive surveys of sensitive areas and Potential Contaminant Sources
3. Education & Outreach – internal and public
4. Prioritize Potential Threats –Megafire, Spills, HABs

Source Water Assessments

Updated Source Water Assessment

City of Grants Pass

PWS #4100342

January 2018

Prepared for:

City of Grants Pass

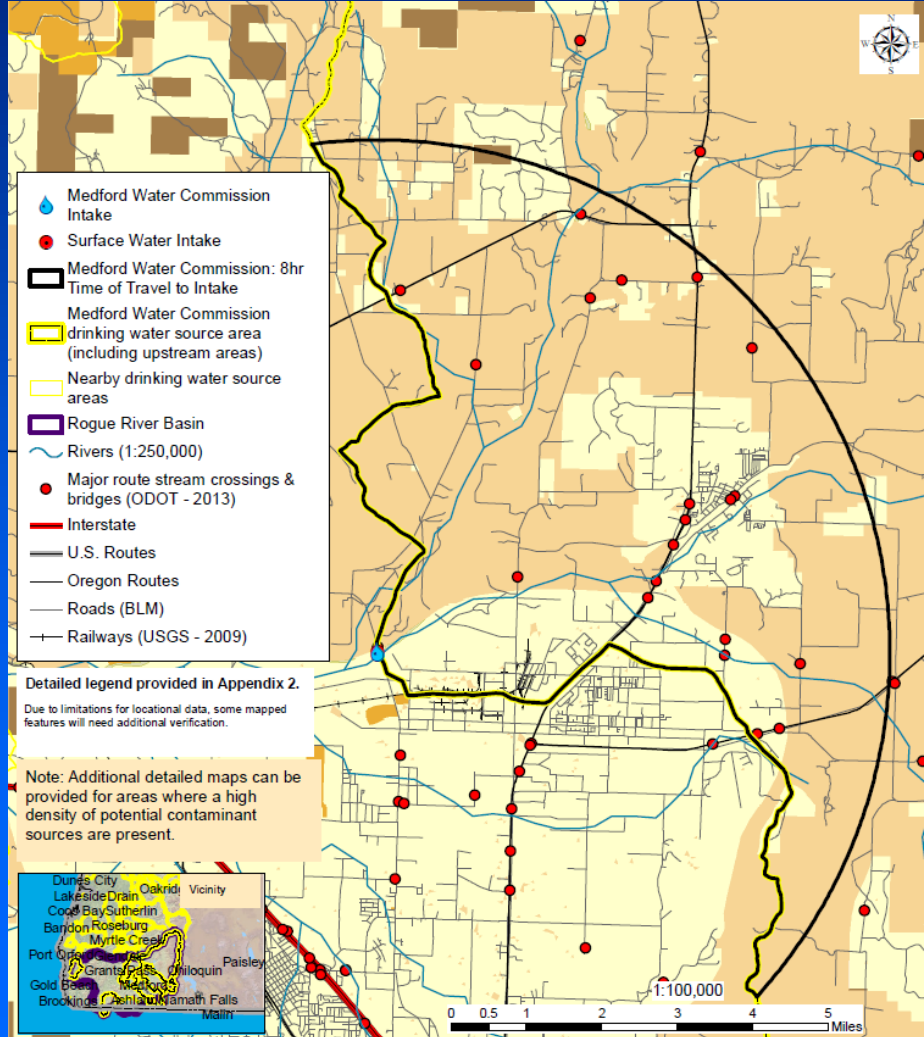
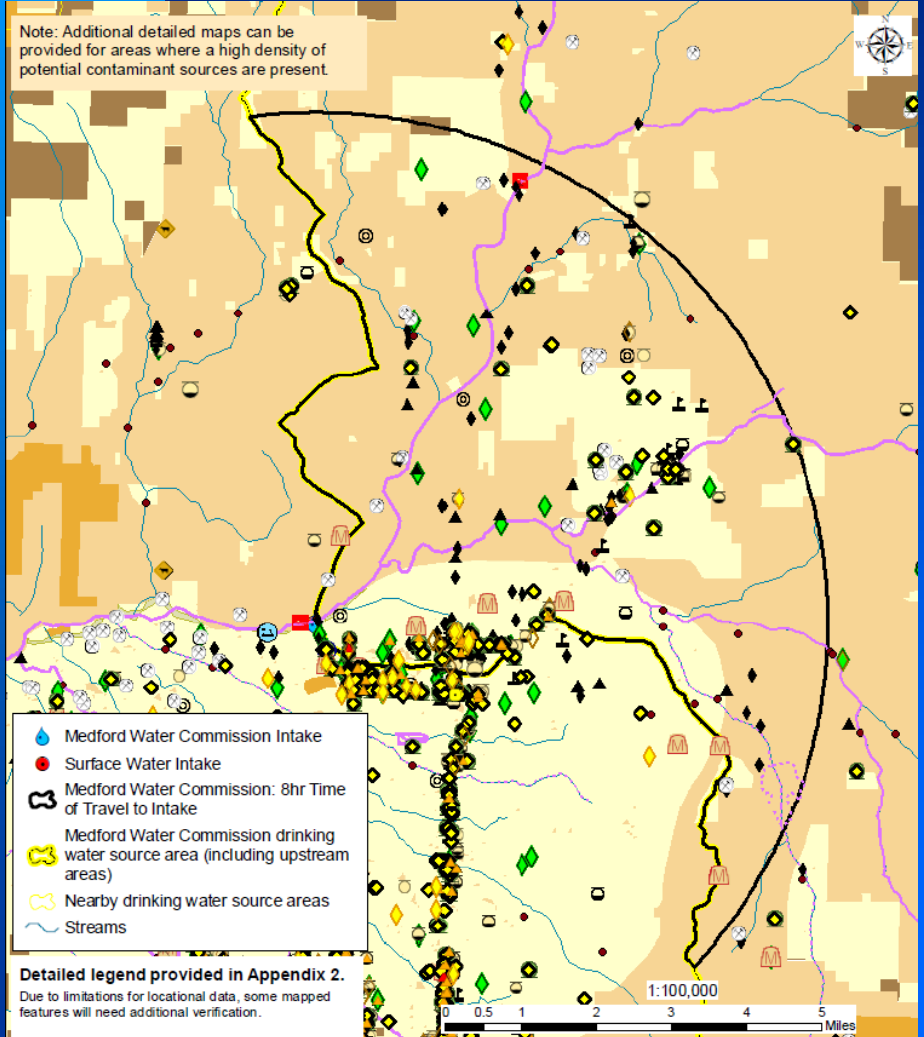


Prepared by:

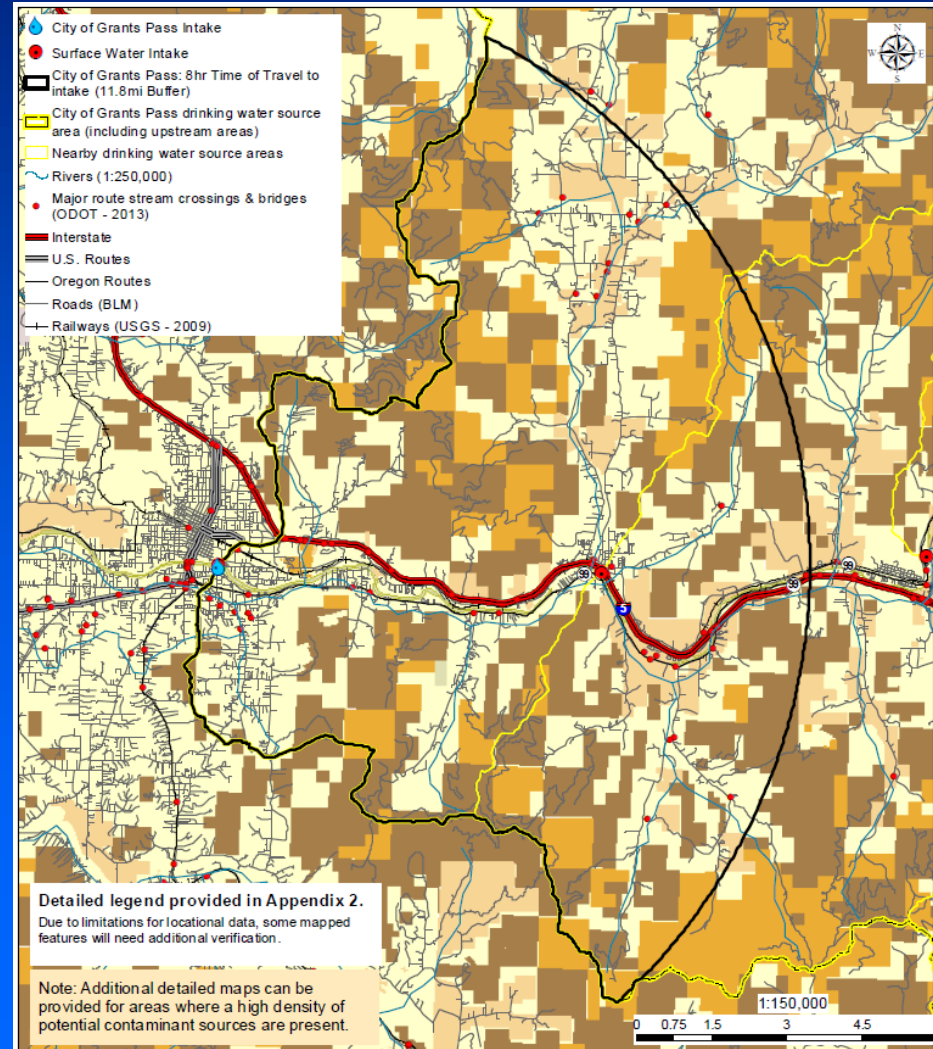
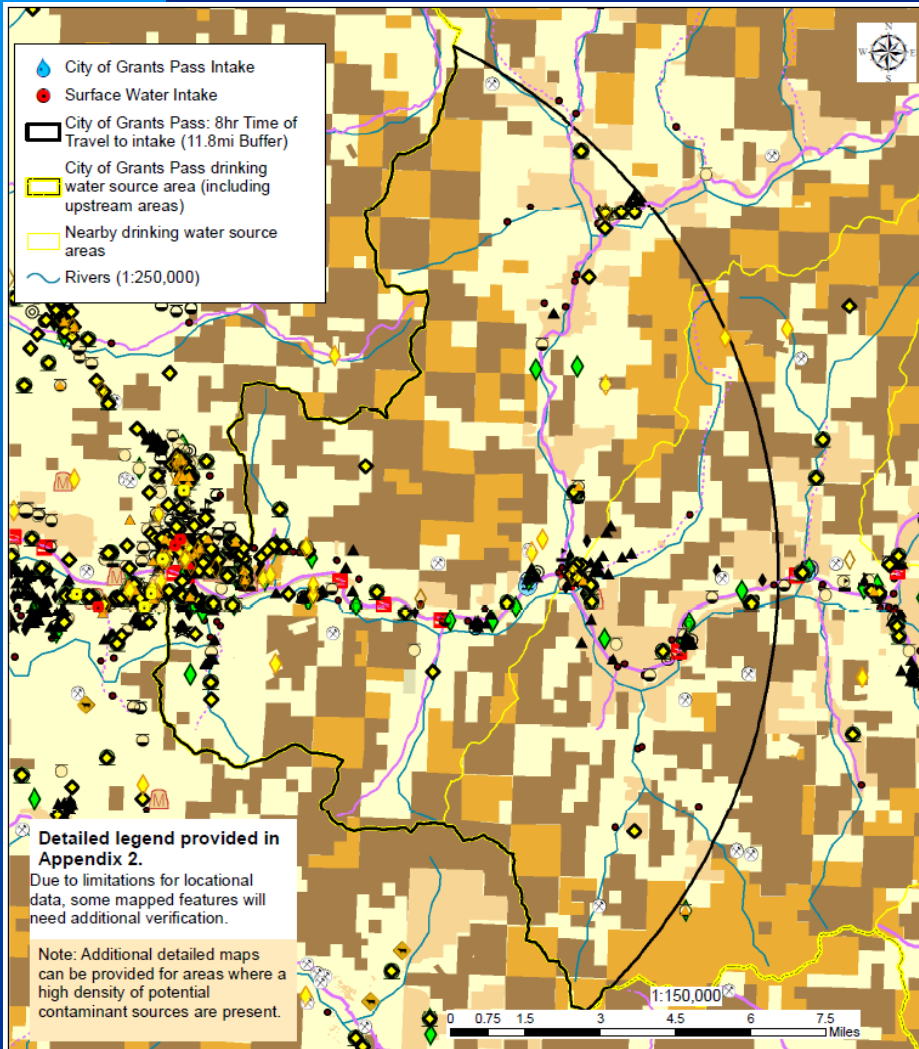


State of Oregon
Department of
Environmental
Quality

MWC Assessment



Grants Pass Assessment



NPS Water Quality Impairments



Treatment Plant on Rogue R.

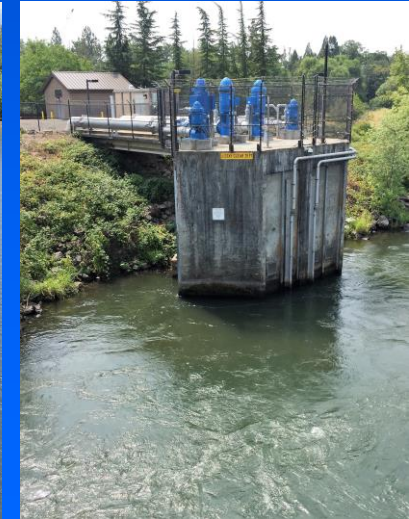


Mouth of Little Butte Creek

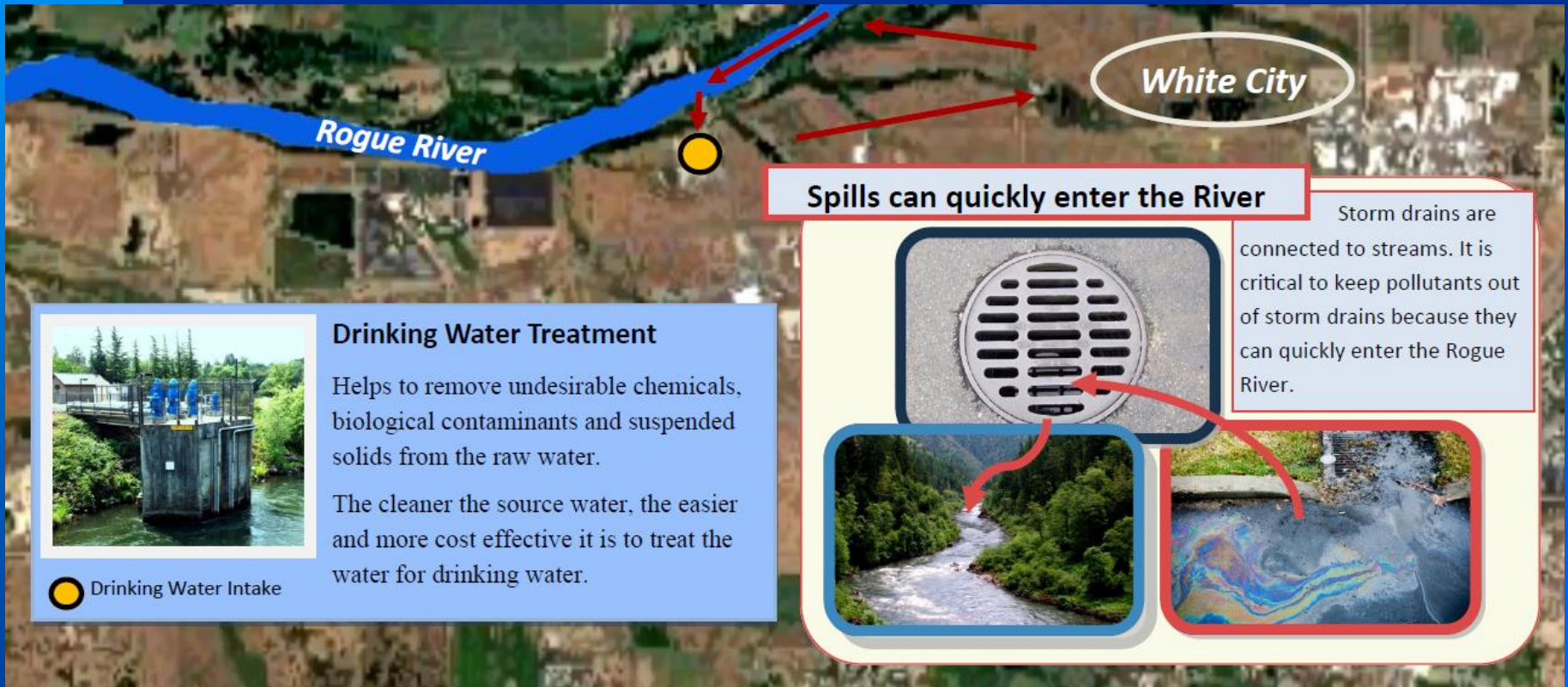


Summer of 2018

Little Butte Creek
flow hugs south
bank of the Rogue



Spill Prevention & Response



Rogue River

White City

Spills can quickly enter the River


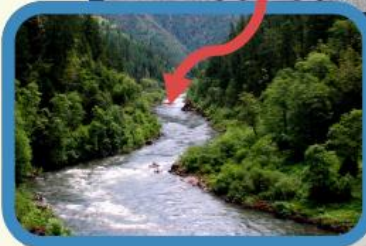


Storm drains are connected to streams. It is critical to keep pollutants out of storm drains because they can quickly enter the Rogue River.

Drinking Water Treatment

Helps to remove undesirable chemicals, biological contaminants and suspended solids from the raw water.

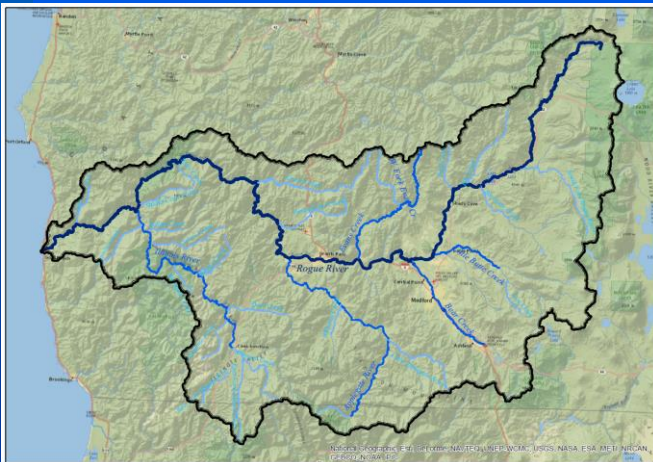
The cleaner the source water, the easier and more cost effective it is to treat the water for drinking water.

Drinking Water Intake



Where we are now, and where we're going

Future of Source Water Protection in the Rogue



Future of SWP in the Rogue

- ◆ Develop DW Protection Plans and BMPs
- ◆ Prioritize DW Programs and Actions: e.g., Spill Response – improve communications & response plans
- ◆ Strengthen Regional Drinking Water Partnership – seek funding, share resources, education/outreach and implement regional projects.

Questions?



- 💧 Craig Harper, Watershed Administrator
- 💧 541-774-2453
- 💧 craig.harper@medfordwater.org

