

Knowledge Development and Transfer – Sustainable Documentation

AMERICAN WATER WORKS ASSOCIATION

PACIFIC NORTHWEST SECTION ANNUAL CONFERENCE

May 1, 2019

Gary Tollefson (Skagit Public Utility District) &

Alena Thurman (Carollo Engineers, Inc.)

WATER
OUR FOCUS
OUR BUSINESS
OUR PASSION

Skagit
PUD
PUBLIC UTILITY DISTRICT

carollo
Engineers...Working Wonders With Water®

Who is in the room today?

- Utility Managers
- Utility Operations and Maintenance Staff
- Utility Engineers
- Consultants
- Equipment Vendors

hello

MY NAME IS

Pleasure to meet you.

The silver tsunami is upon us

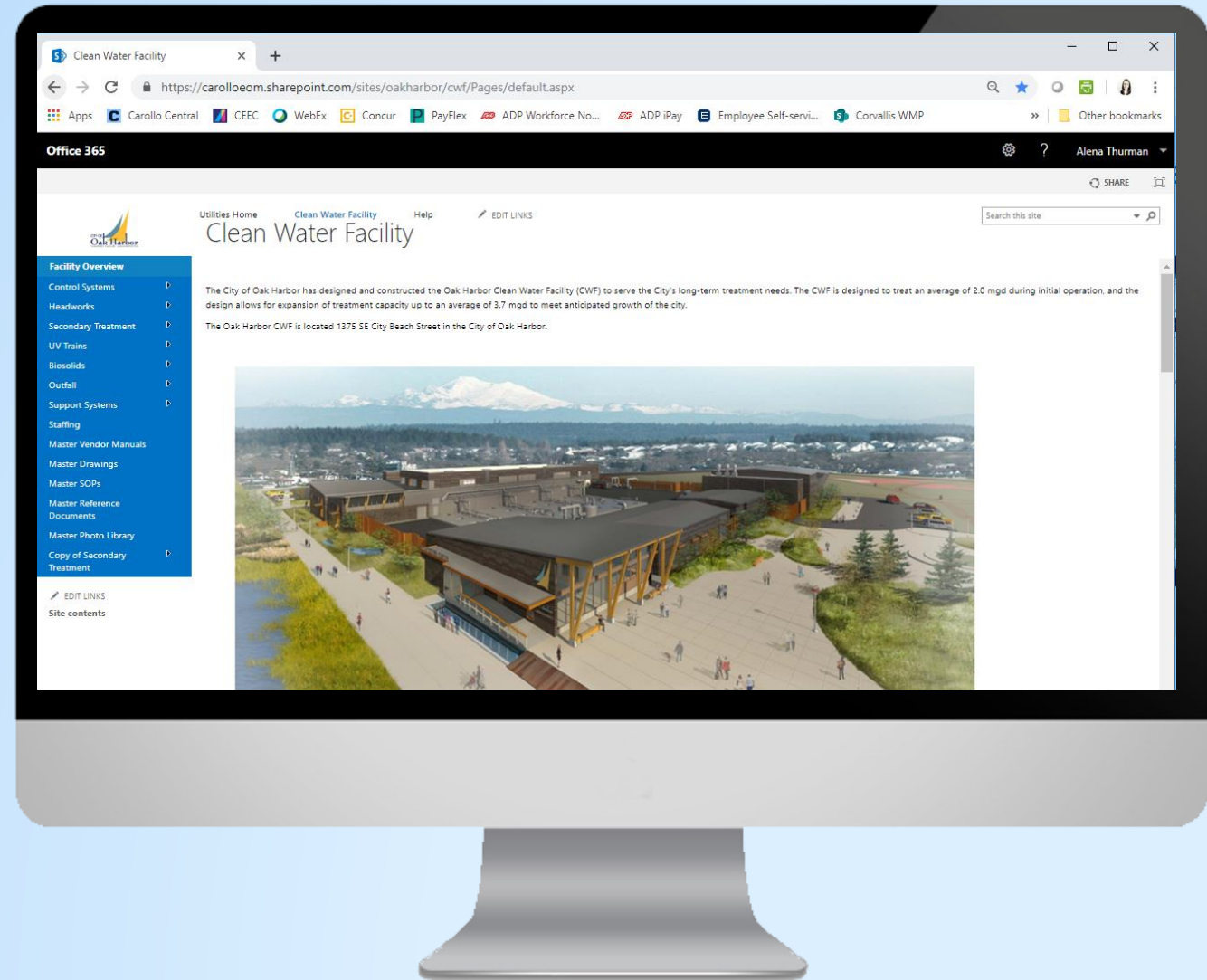
How do we transfer the institutional knowledge of leaders who have operated our plants for decades?



Our utilities need digital tools to facilitate knowledge transfer and training

Electronic Operations Manuals (EOMs) offer information that is:

- All in one place (past versions too)
- Organized
- Online and accessible from anywhere
- Visual
- Searchable
- Secure



Operators aren't the only users

EOMs Benefit:

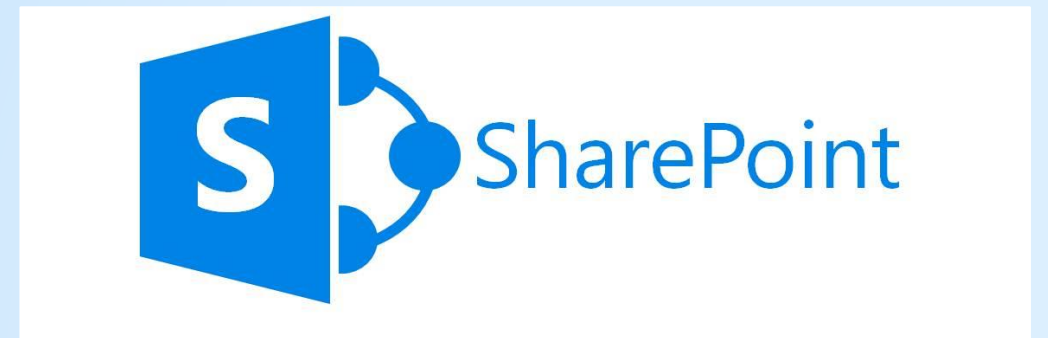
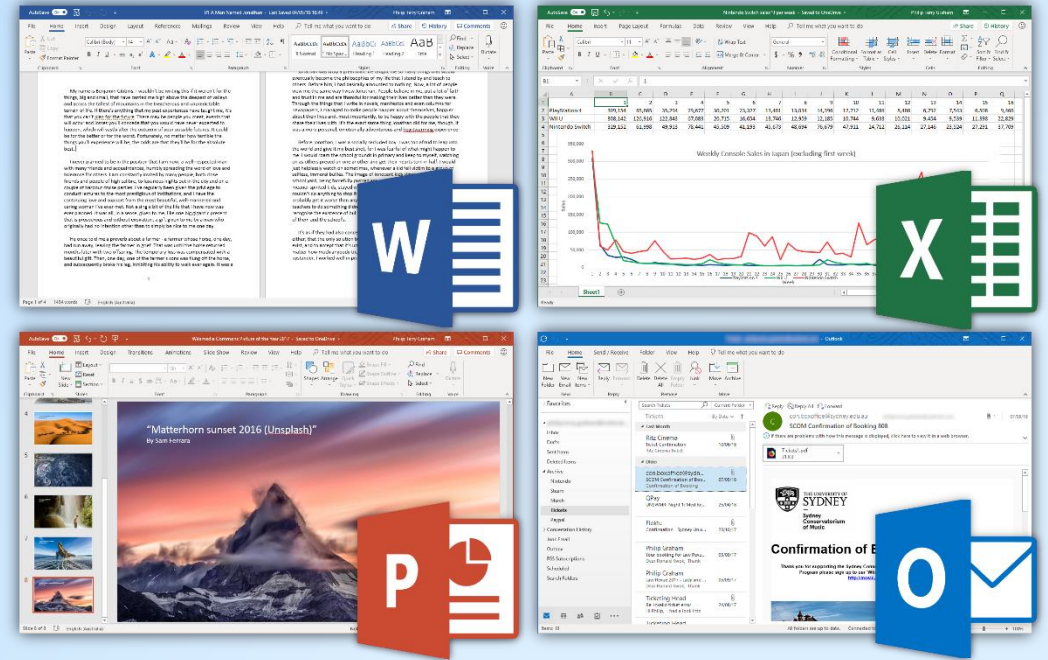
- Operators
- Maintenance staff
- Utility engineers
- Managers
- Board/Council members
- Contractors & consultants
- Public



How do you make documentation sustainable?

Empower users to keep it up-to-date.

- Make it easy to use and edit
 - Create content in familiar and accessible programs
- Use an industry standard platform
 - Longevity: will be maintained by the developer
 - Customer support.
- Hosted on utility's server



Why did Skagit PUD choose to develop an EOM for Judy Reservoir WTP?

- Washington Department of Health required a new manual to be developed.
- Several modifications made to Judy Reservoir WTP since original construction in 1990.
- Wanted to integrate the various operations manuals into one cohesive resource.
- Needed to correct outdated information.

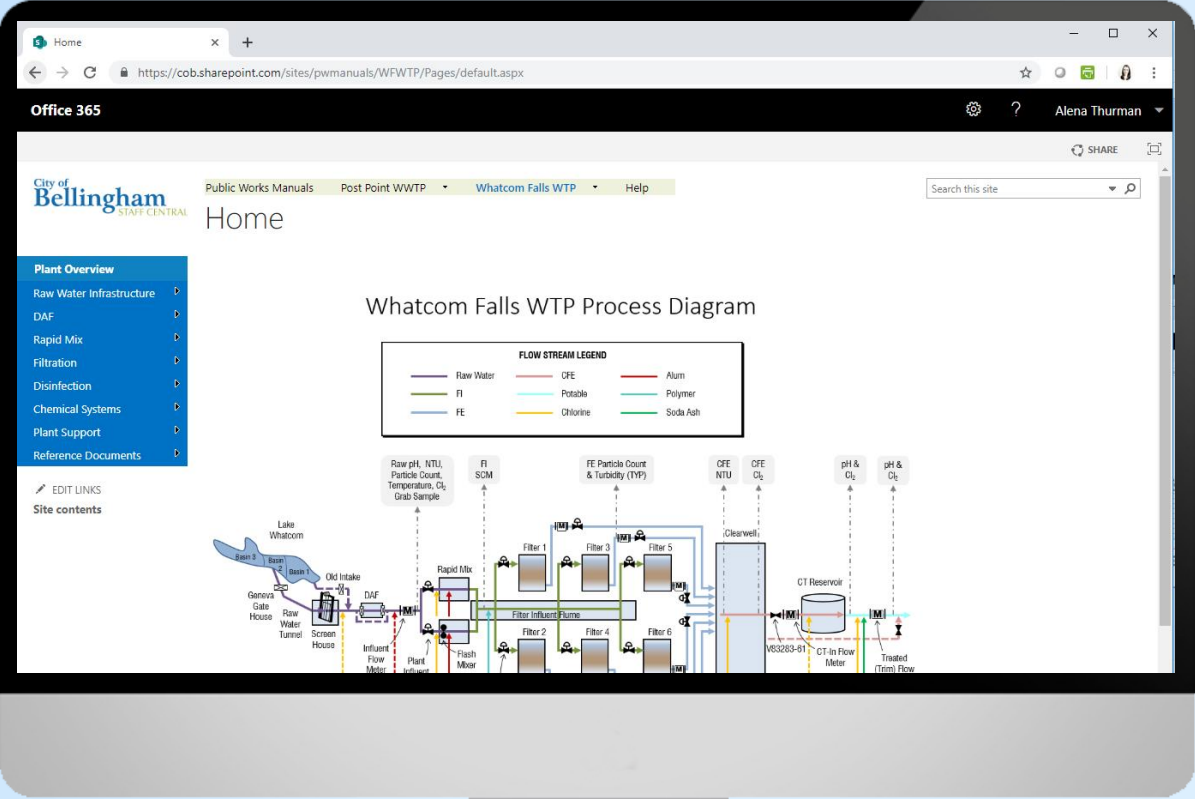
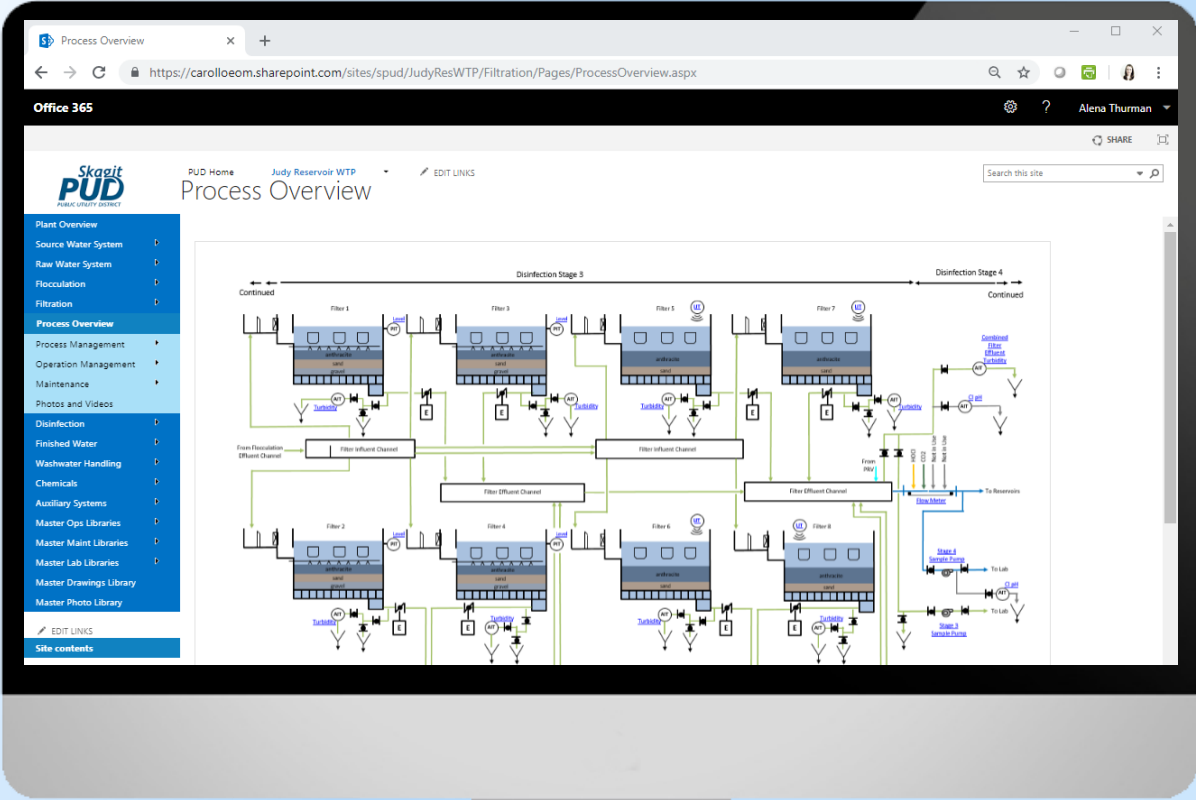


Why did Bellingham choose to develop an EOM for Whatcom Falls WTP?

- Motivated by retirement of key staff.
- Wanted to organize and modernize their document management



What does an EOM look like?



How do you develop an EOM?

- It takes plant staff commitment
- Start by determining EOM framework
- Plant staff provide existing documentation to consultant
- Information gathering site visits for each process
- Consultant develops content
- Plant staff review






Questions?

Skagit PUD

PUBLIC UTILITY DISTRICT

History of Judy Reservoir



L.B. Judy
First General Manager
Public Utility District No. 1 of
Skagit County

Year	Event	Storage Capacity	Spillway Elevation
1936	Public Utility District No. 1 of Skagit County formed by voters.		
1940	Skagit PUD purchases water system from Cedar Lake Water Corporation, including Collius Mountain diversions at Gilligan, Salmon and Turner Creeks.		
1947	Construction of Judy Reservoir completed.	450 million gallons	
1965	Judy Reservoir dam elevations increased.	1.01 billion gallons	457'
2001	Skagit River Diversion Flow Rule established. Judy Reservoir dam elevation raised.	1.45 billion gallons	465.7'
2007	Construction begins at Skagit River Diversion Pump Station.		
2010	Skagit River Diversion Pump Station begins supplying water to Judy Reservoir. Water Treatment Plant upgraded to allow for peak capacity of 30 million gallons per day.		
1990	Construction of existing Gilligan Creek intake pipeline.		
1996	New Judy Reservoir Water Treatment Plant construction completed. Skagit PUD enters into a landmark agreement with other agencies and Indian tribes that secures District's water rights for 50 years.		

