

“Water is a driving  
force of nature.”

---

-Leonardo diVinci

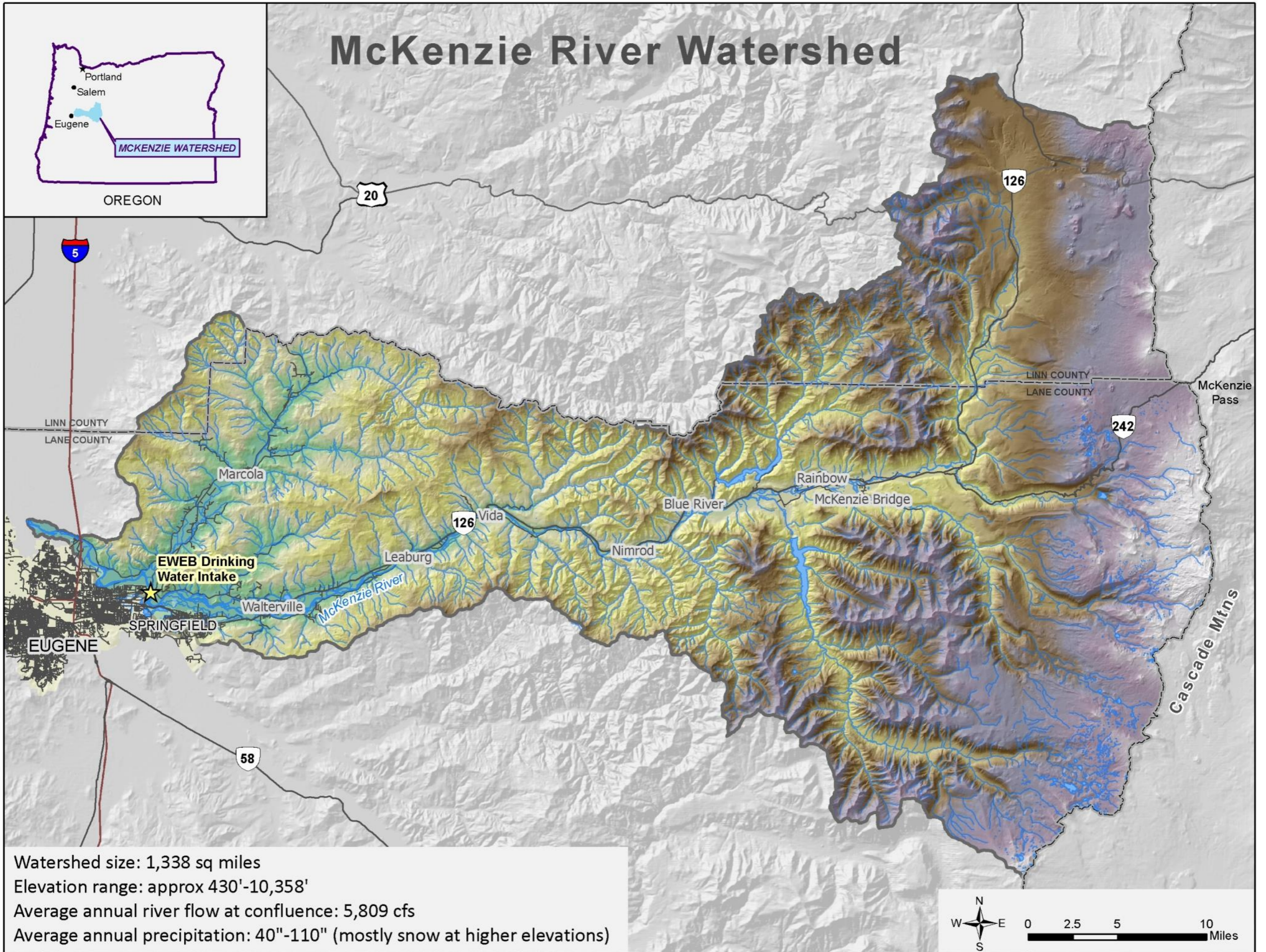




# Healthy Headwaters & Water Supply

**AWWA Conference May 2, 2019**  
**Kimery Wiltshire, Carpe Diem West**

# McKenzie River Watershed



Watershed size: 1,338 sq miles  
Elevation range: approx 430'-10,358'  
Average annual river flow at confluence: 5,809 cfs  
Average annual precipitation: 40"-110" (mostly snow at higher elevations)





**“ Of course we’re never going to be able to treat everything we need to treat. We can sit on our hands and do nothing, or we can try to get smarter by working on the ground.”**

**-Western water utility manager**



# A few lessons ...

- ❖ Make the connections between forest health and vitality of communities, recreation, economy, water supply
- ❖ It's a much smarter business move to invest now than later
- ❖ Public-private partnerships are a critical ingredient to any solution set



*“We could just continue to pound on our congressmen and senators and the Forest Service for more federal money to fund the treatment. The end result of that is just a lot of yelling and screaming and not a lot gets done... There’s not enough money in the Treasury for the work that needs to be done.”*





## Carpe Diem West Healthy Headwaters

- Diverse network of western water leaders
- Innovative, collective solutions
- Connect successful source water protection efforts



# CONTACT



## CARPE DIEM WEST

*Our water – Finding solutions together*



209 Caledonia Street  
Second Floor  
Sausalito, California  
94965



415-322-2112



[info@carpediemwest.org](mailto:info@carpediemwest.org)





