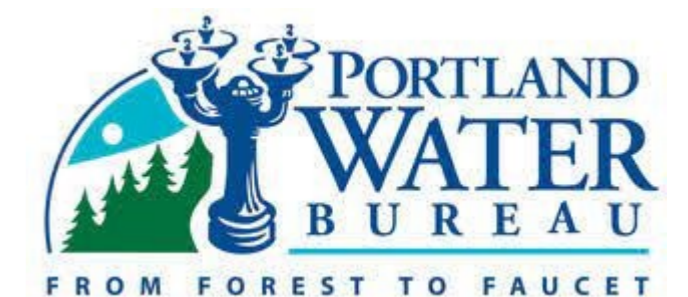


2022 AWWA CONFERENCE, TACOMA

# WORKING WITH ARCHITECTS 101

UNDERSTAND THE DESIGN PROCESS AND GET WHAT YOU WANT

APRIL 28, 2022



# AGENDA

1. Introductions
2. What is an architect, really?
3. Pre-Design and Design Phase roles
4. Bull Run team case study
5. Questions and comments

# INTRODUCTIONS



LYDA HAKES  
FILTRATION FACILITY PROJECT MANAGER



CASEY HAGERMAN  
ARCHITECT / PROJECT MANAGER

# WHAT IS AN ARCHITECT?

THAT DEPENDS, DOESN'T IT?

## ARCHITECT



What my friends think I do



What my mom thinks I do



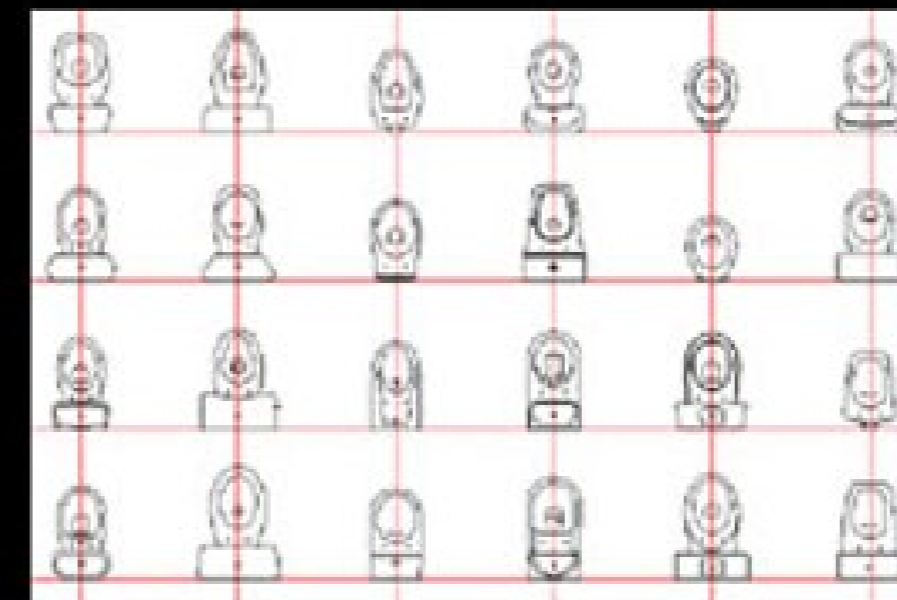
What society thinks I do



What engineers think I do



What I think I do



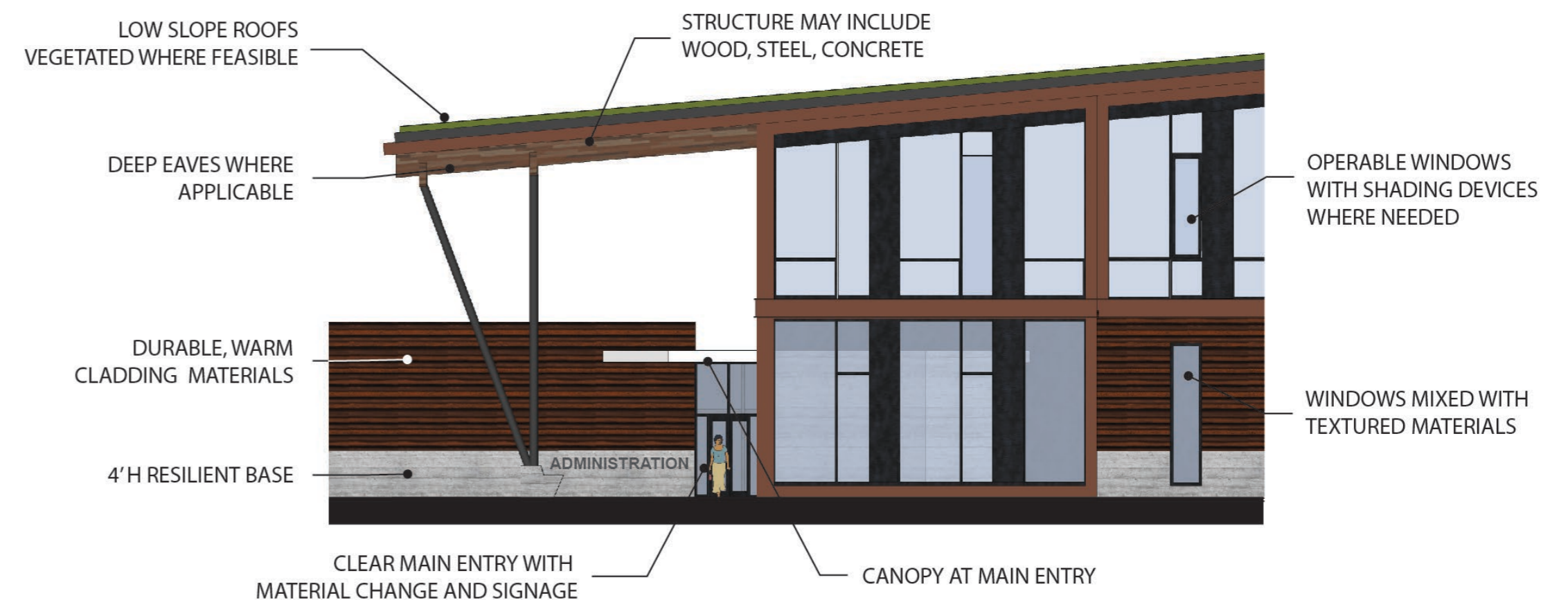
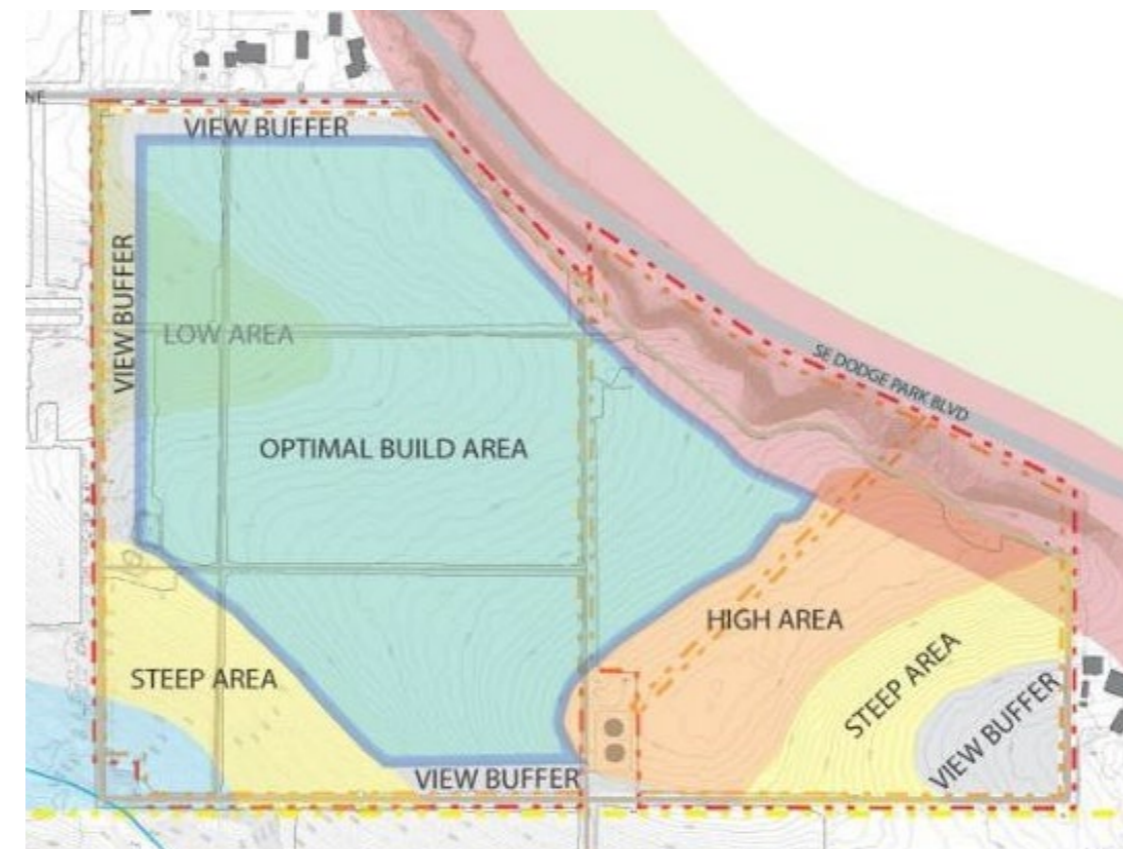
What I really do

# WHAT CAN ARCHITECTS DO?

MORE THAN PRETTY BUILDINGS

## PRE-DESIGN PHASE

- **Integrated Design Team Member**
  - Overall design management
  - Sustainability and resilience leads
  - Site layout and circulation options
  - People-space specialists
  - Fire-life safety and code review



# WHAT CAN ARCHITECTS DO?

MORE THAN PRETTY BUILDINGS

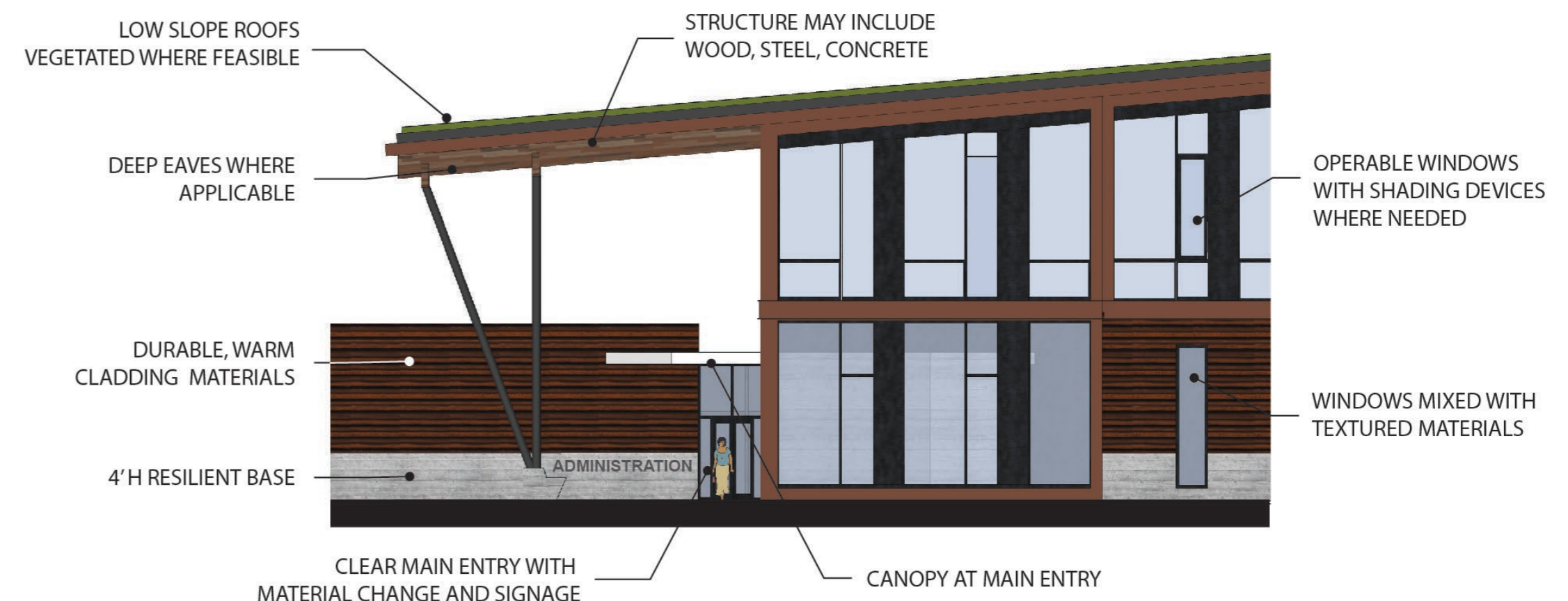
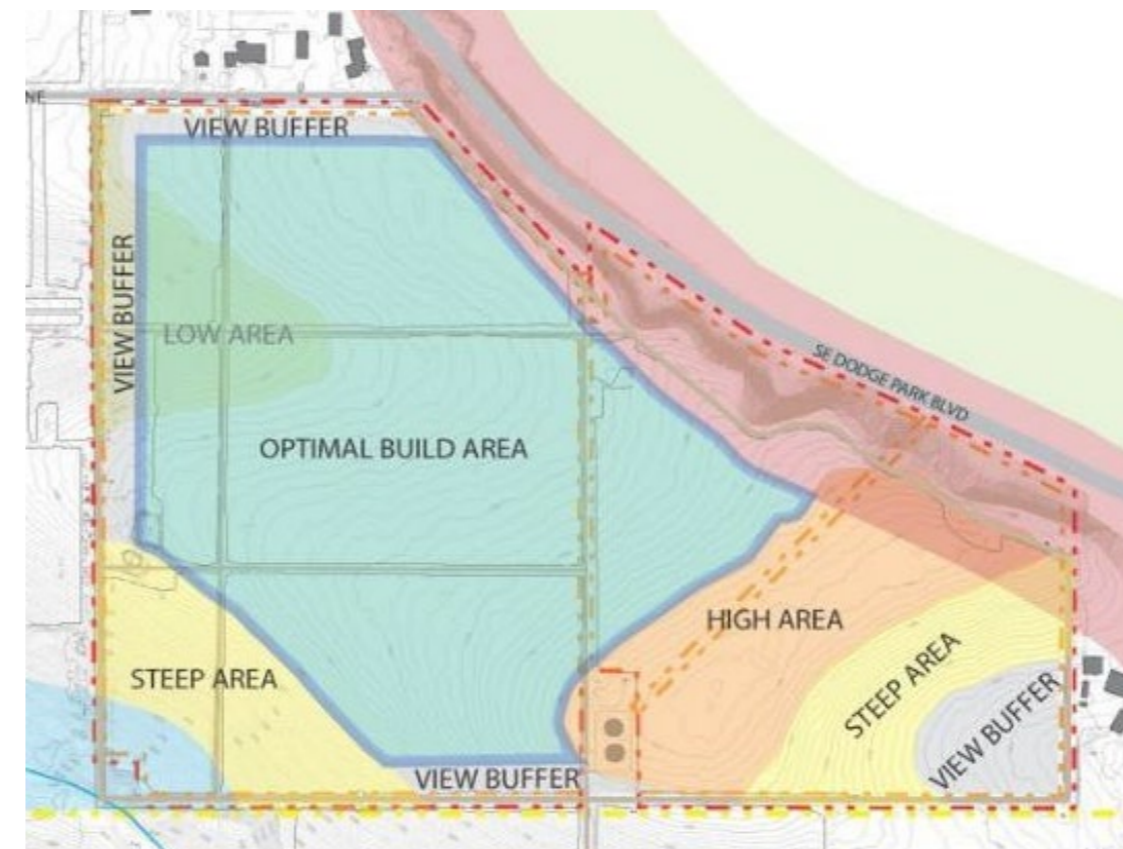
## PRE-DESIGN PHASE

- **Integrated Design Team Member**

- Overall design management
- Sustainability and resilience leads
- Site layout and circulation options
- People-space specialists
- Fire-life safety and code review

- **Client Interface**

- Confirm scope and programming
- Develop project goals for O&M
- Design guideline development – Look & feel
- Public outreach – Good neighbor agreements
- Public tour and interpretive spaces

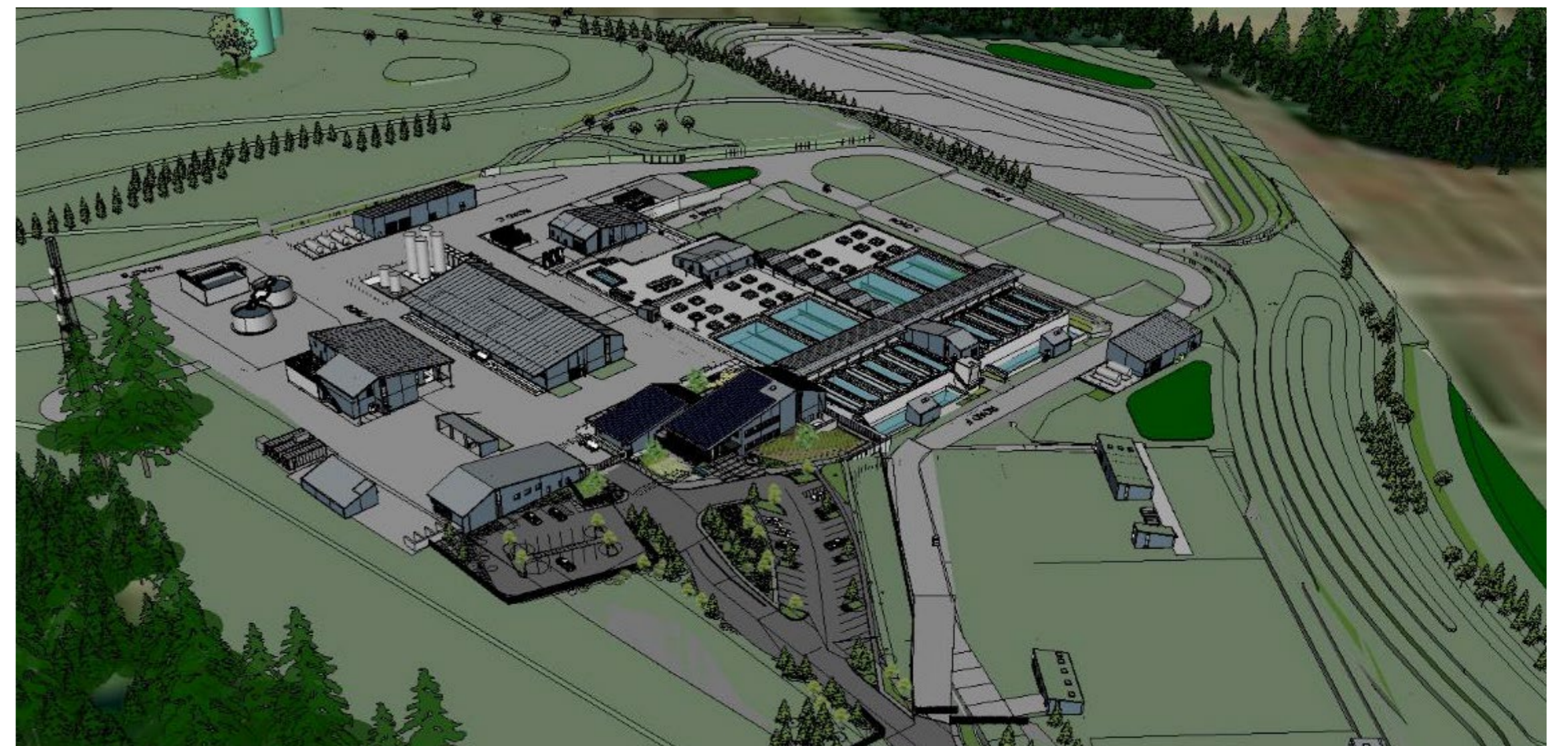


# WHAT CAN ARCHITECTS DO?

MORE THAN PRETTY BUILDINGS

## DESIGN PHASE

- **Integrated Design Team Member**
  - Structural input and review
  - Lighting and acoustics team
  - Civil and landscape team
  - Land Use coordination
  - Fire Marshall interface
  - Site and building security



# WHAT CAN ARCHITECTS DO?

MORE THAN PRETTY BUILDINGS

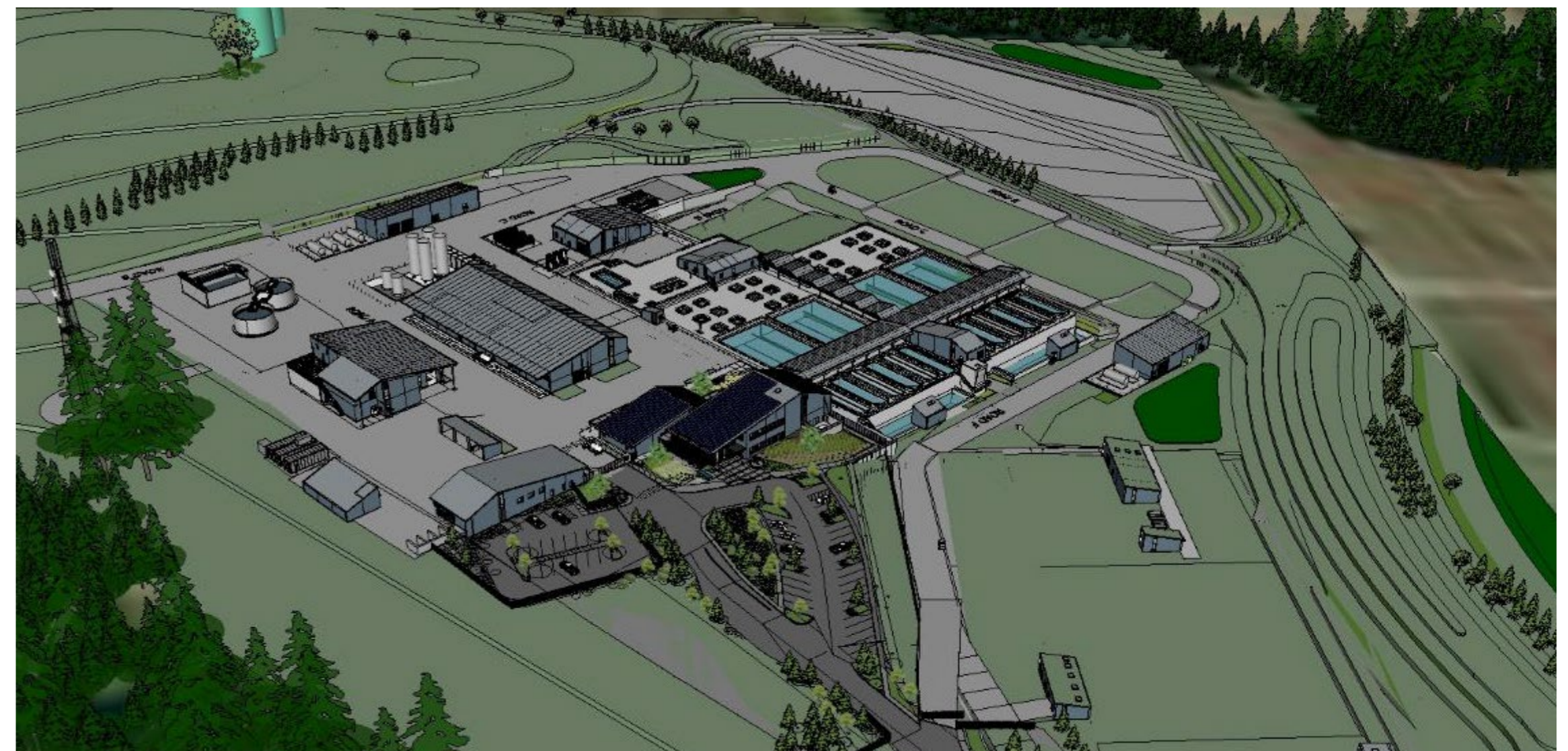
## DESIGN PHASE

- **Integrated Design Team Member**

- Structural input and review
- Lighting and acoustics team
- Civil and landscape team
- Land Use coordination
- Fire Marshall interface
- Site and building security

- **Client Interface**

- Work as a lead design team contact
- Visualizations and 3D walk-throughs
- Deep dive on people spaces
- Updating aesthetic preferences
- Public outreach presentations and graphics
- Help prioritize decisions
- VE implementation



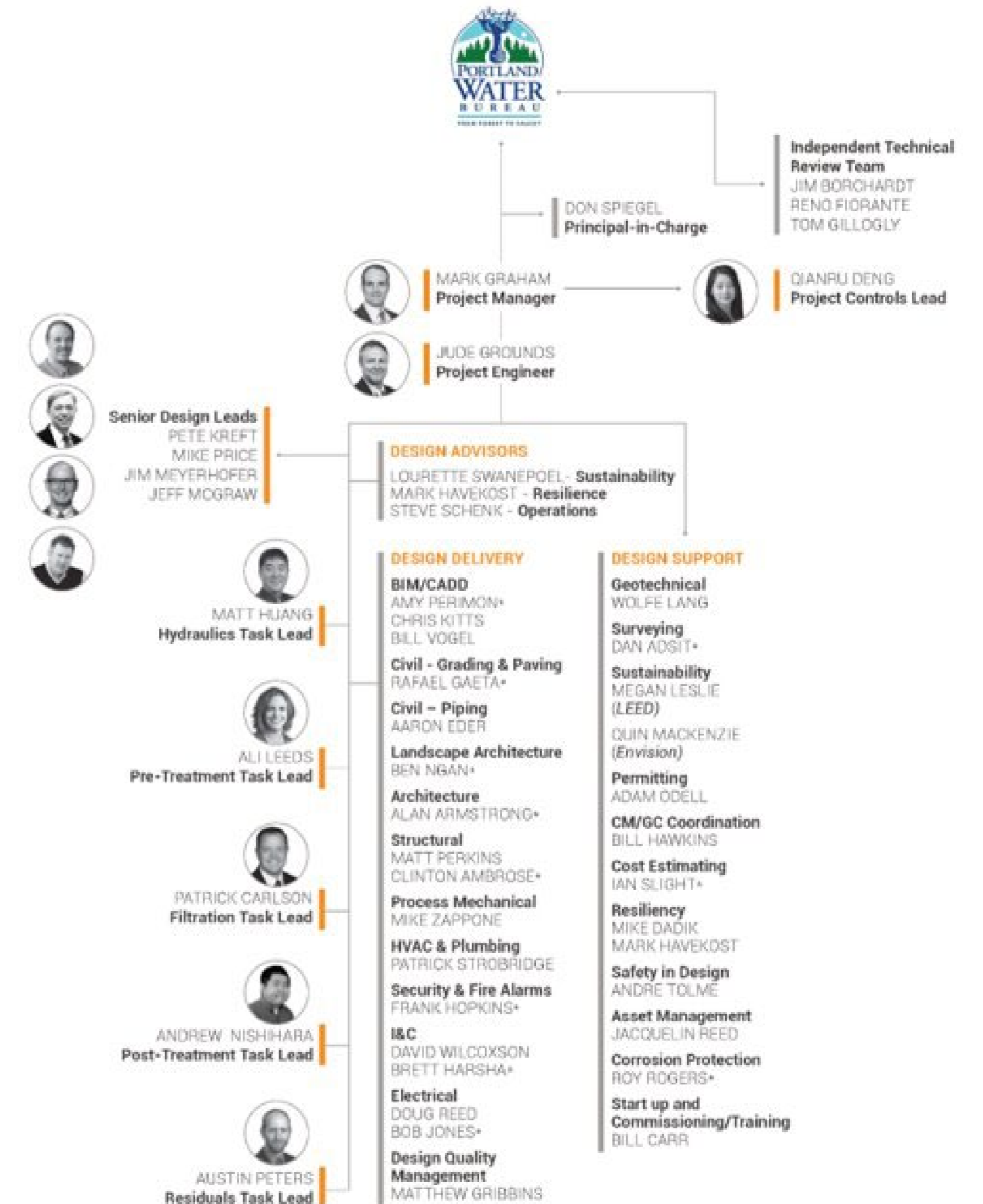


# BULL RUN CASE STUDY

AN EXAMPLE OF GREAT INTEGRATED TEAMING

## WHAT CONTRIBUTES TO THE SUCCESS?

- Prior experience designing these facilities
- People-focused design along with the treatment process
- Building layout leads with engineers
- Personal commitments to project success



# BULL RUN CASE STUDY

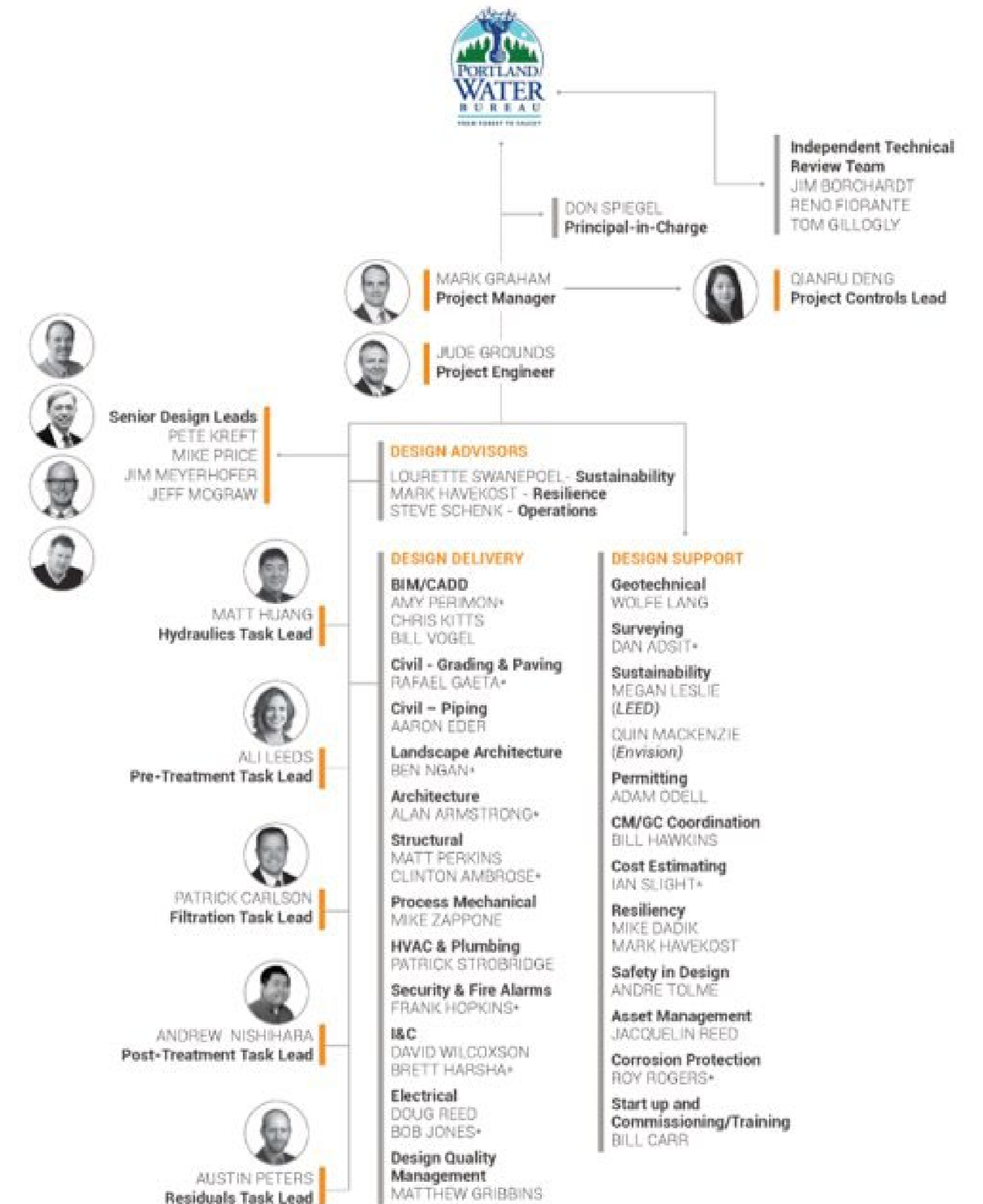
AN EXAMPLE OF GREAT INTEGRATED TEAMING

## WHAT CONTRIBUTES TO THE SUCCESS?

- Prior experience designing these facilities
- People-focused design along with the treatment process
- Building layout leads with engineers
- Personal commitments to project success

## WHAT TOOLS ARE USED?

- Open communication to address issues early
- Bi-Weekly discipline check-ins for consistent client input
- Architectural Sketchup model for 3D walkthroughs
- Humor and humanity to keep morale up
- Ultra-organized project managers throughout team



# BULL RUN CASE STUDY

AN EXAMPLE OF GREAT INTEGRATED TEAMING

## WHAT CONTRIBUTES TO THE SUCCESS?

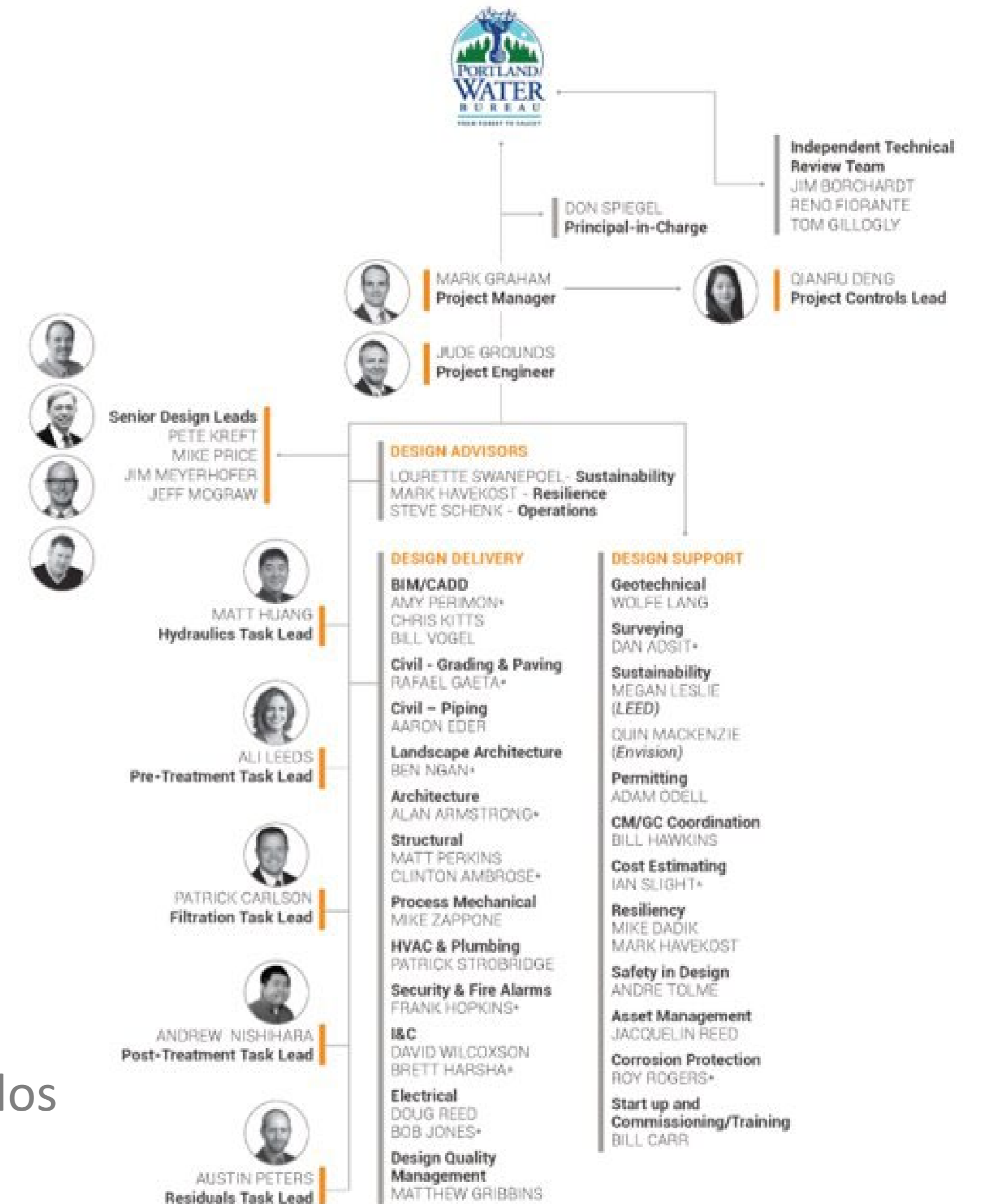
- Prior experience designing these facilities
- People-focused design along with the treatment process
- Building layout leads with engineers
- Personal commitments to project success

## WHAT TOOLS ARE USED?

- Open communication to address issues early
- Bi-Weekly discipline check-ins for consistent client input
- Architectural Sketchup model for 3D walkthroughs
- Humor and humanity to keep morale up
- Ultra-organized project managers throughout team

## WHAT ARE THE LESSONS LEARNED SO FAR?

- Early time-intensive work pays off
- Architects can help with overall design coordination
- Covid WFH tools help speed up coordination and break down discipline silos
- Getting to know one another motivates the team



THANK YOU!

QUESTIONS  
&  
COMMENTS

