

LEVERAGING INNOVATIONS

Utilizing Technology to Add
Value for Project Stakeholders



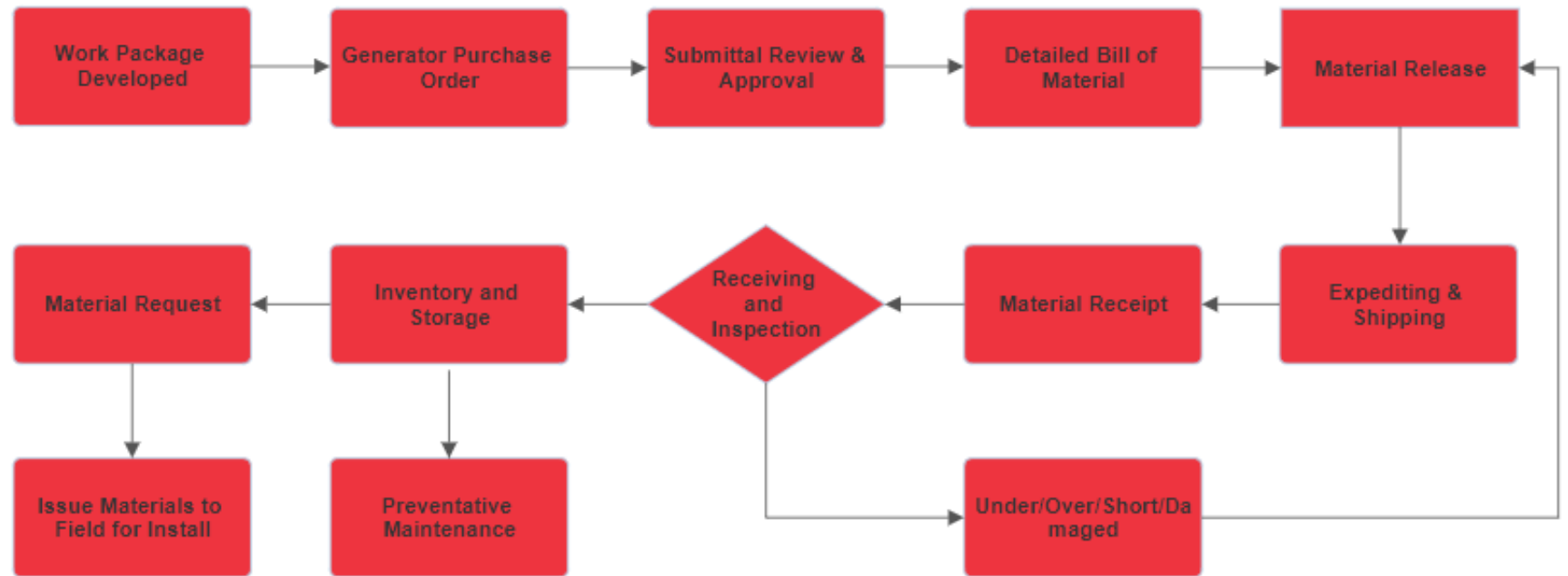
DECISION MAKING



- 1. Define the Problem**
- 2. Problem Analysis**
 - Define Current Solutions
 - Environment to be Deployed
 - Develop “Ideal Workflow”
- 3. Research Solutions**
 - Consider Do Nothing & Make Approaches
- 4. Analyze Solutions**
 - Compare Ideal vs. Provided Workflows
 - Costs Analysis
 - Training Program & Support
 - Integration with ERP
- 5. Comparison**
 - SME Review
- 6. Approval**
- 7. Execution**
 - Assign Champion
 - Schedule Training
 - Order Hardware

SITESENSE

1. Define the Problem
2. Problem Analysis
3. Research Solutions
4. Analyze Solutions
5. Comparison
6. Approval
7. Execution




SITESENSE


- Permanent Materials
 - Organized by Work Package
 - Material Receiving
 - Inventory & Storage
 - Preventative Maintenance
 - Issuing for Install

4D137AF8-04DB-445C-8577-04B4829E148A

37 > IWP- SUBMERSIBLE SOLIDS HANDLING PUMP COMPONENTS - REFERENCE DOCUMENT - MTO/WP

PROPERTY	VALUE
Name	37 > IWP- Submersible Solids Handling Pump Components
CWA	37-Equalization Basin
Originating System	InEight - Plan
Schedule Start	2024-08-02
Status	Draft
Type	Installation Work Package



STATUS	
Location	Geostamp No known location
Tracking	
Requirements	None
Document Status	Locked

DOCUMENT LINE ITEMS

100% On Hand Not 100% On Hand 100% On Request Not 100% On Request 100% Issued Not 100% Issued No Filter

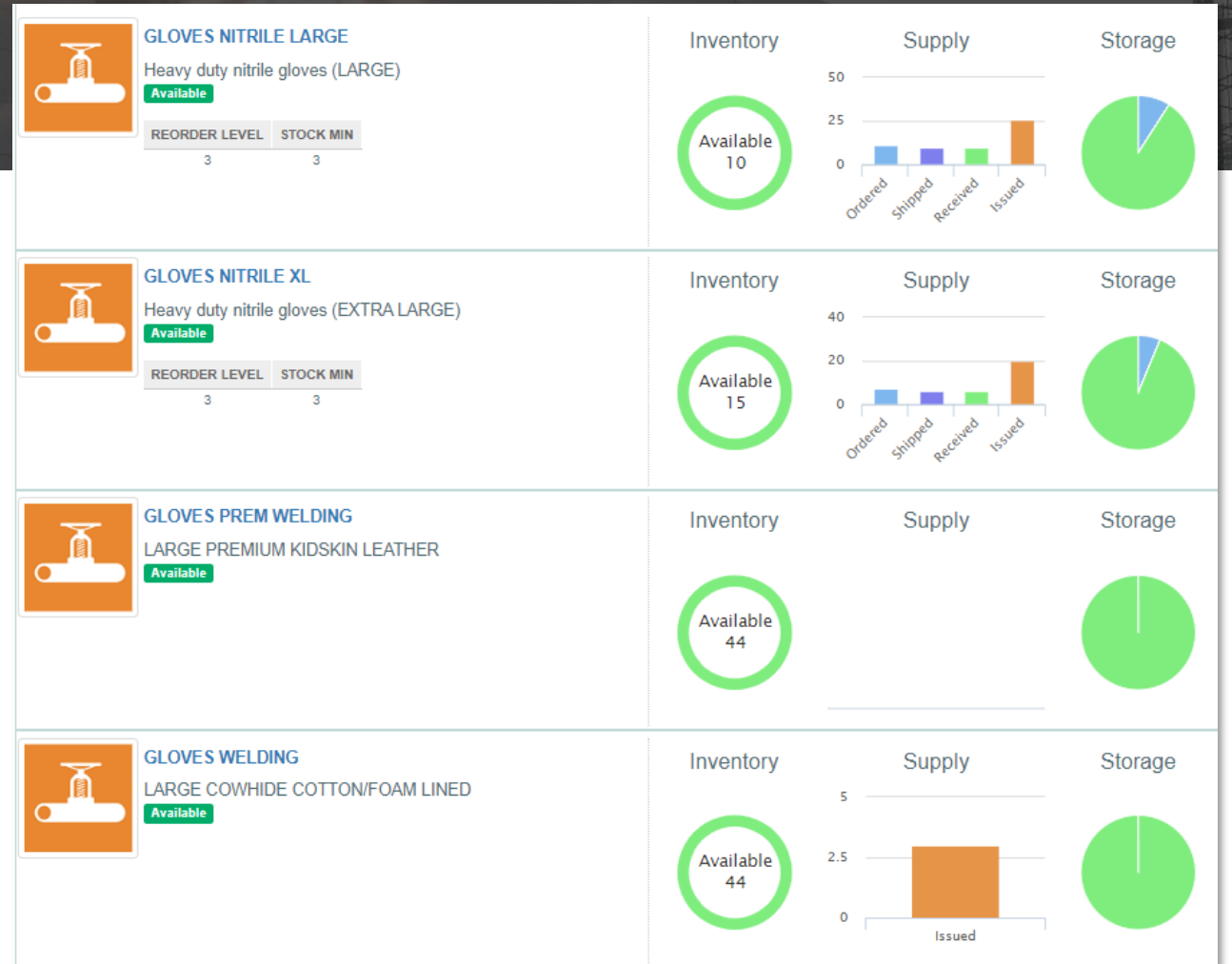
Document Line Items (Lines: 11)

LINE ITEM	RESOURCE	QTY NEEDED	DATE NEEDED	STATUS
1	14-589106 - SAFETY HOOKS, SS Commodity: Pipe Specialty Items	6 EA	2024-08-02	6 on hand 0 remaining to be requested 0 on request 0 issued
2	6200900 - GRIP EYE Commodity: Pipe Specialty Items	2 EA	2024-08-02	3 on hand 2 remaining to be requested 0 on request 0 issued
3	14-407129 - SOCKET, 11-PIN Commodity: Pipe Specialty Items	6 EA	2024-08-02	6 on hand 0 remaining to be requested 0 on request 0 issued
4	14-407097 - MINI-CAS, FUS 120 Commodity: Pipe Specialty Items	6 EA	2024-08-02	6 on hand 0 remaining to be requested 0 on request 0 issued
5	6023306 - 6x6 CONN DISCH, CI Commodity: Pipe Specialty Items	6 EA	2024-08-02	6 on hand 0 remaining to be requested 0 on request 0 issued

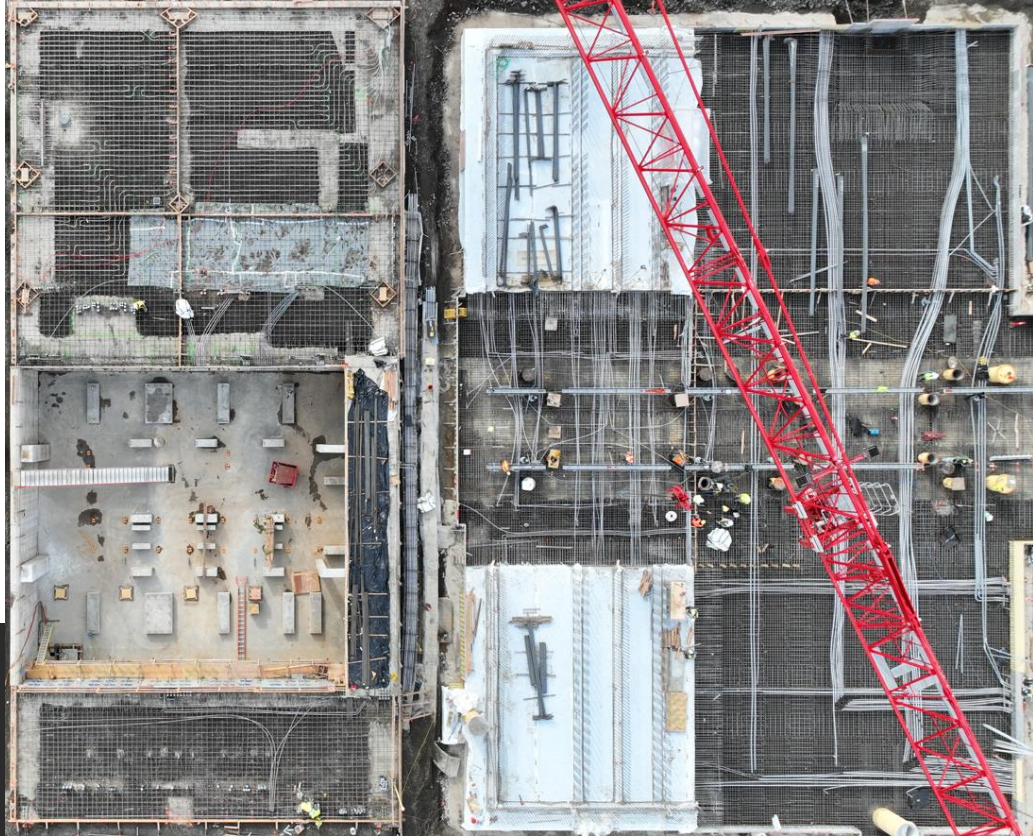


SITESENSE

- Consumables & Safety Items
 - Maintain accountability
 - Minimum Inventory
- Small Tools & Equipment
 - Planning routine maintenance
 - Maintain accountability
 - Forecast and optimize onsite inventory



DRONES IN CONSTRUCTION



DRONE DEPLOY



Matthew Greenslade

Sep 1, 2023 to Base Plane

Area:	3458.42 ft ²
Cut:	557.39 y ³
Fill:	1.05 y ³
Net Volume:	-556.34 y ³
Material Volume:	557.39 y ³

Material

Surface

Digital Surface Model

Base Plane

Linear fit

[Add Issue](#)

Matthew Greenslade

Jul 14, 2023 to Base Plane

Area:	2029.98 ft ²
Cut:	0.67 y ³
Fill:	650.09 y ³
Net Volume:	649.42 y ³
Material Volume:	650.09 y ³

Material

Surface

Digital Surface Model

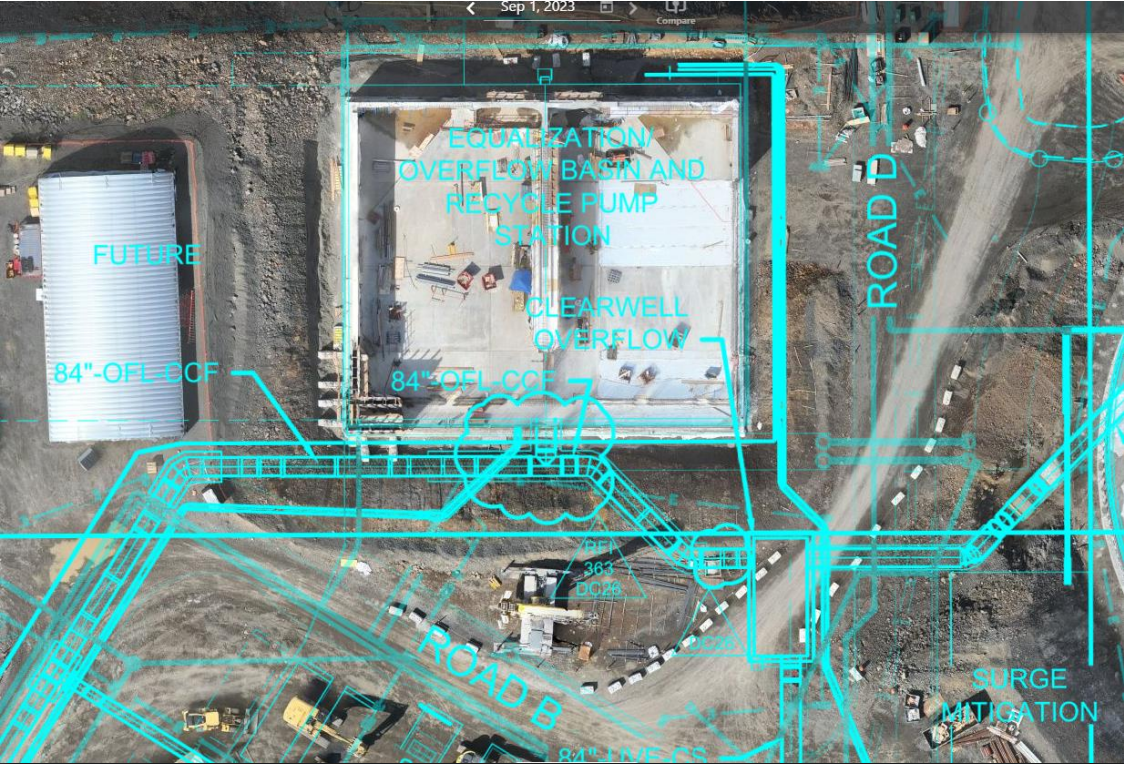
Base Plane

Linear fit

[Add Issue](#)



DRONE DEPLOY



INNOVATIONS – DRONE LOGISTICS



SELECTION PROCESS & ALTERNATIVES



DroneDeploy

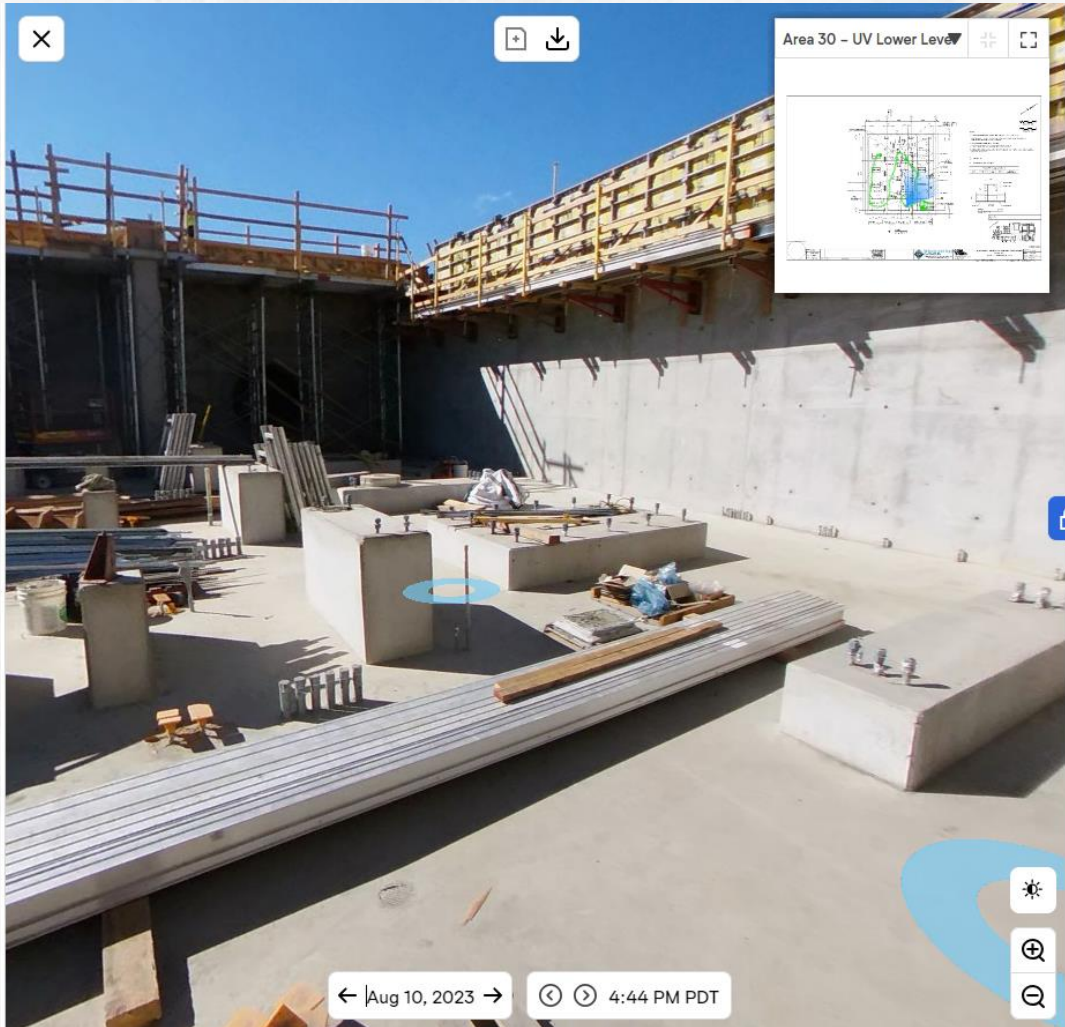
propeller



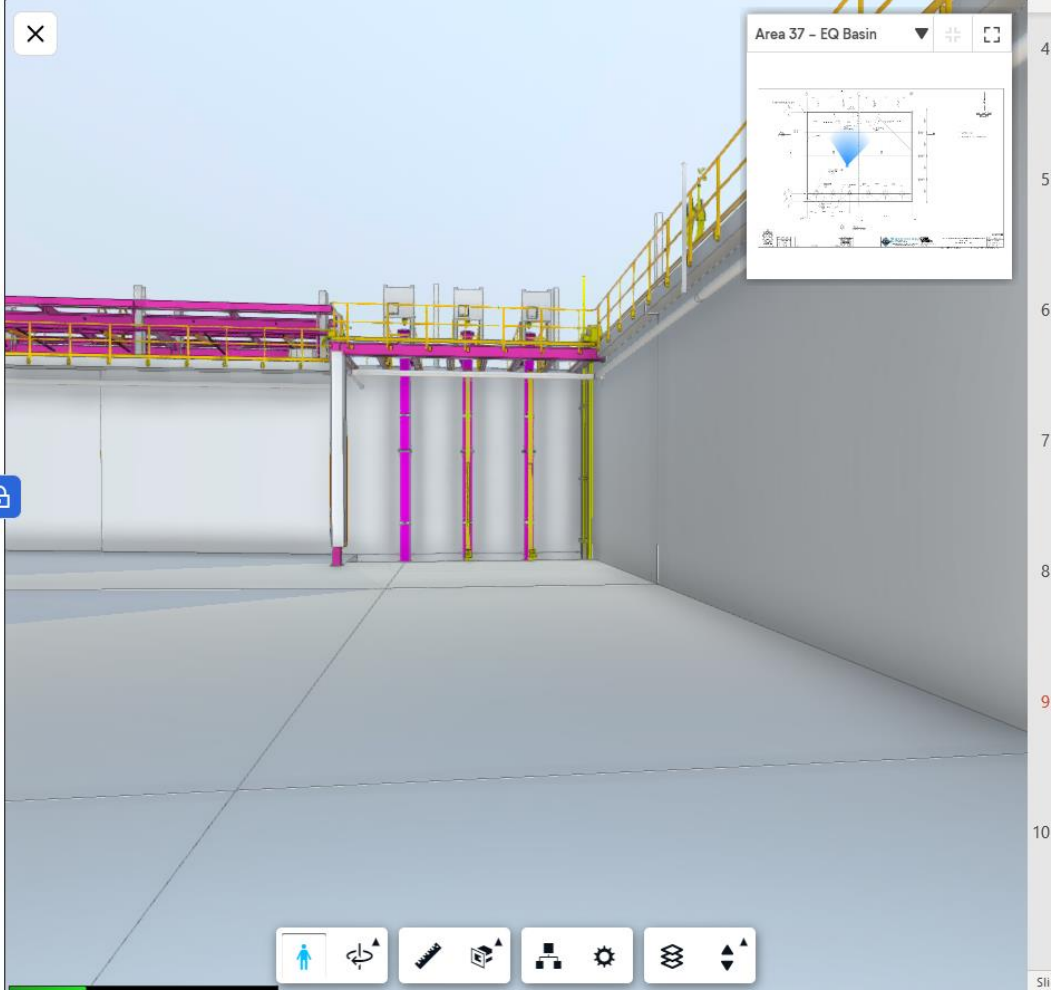
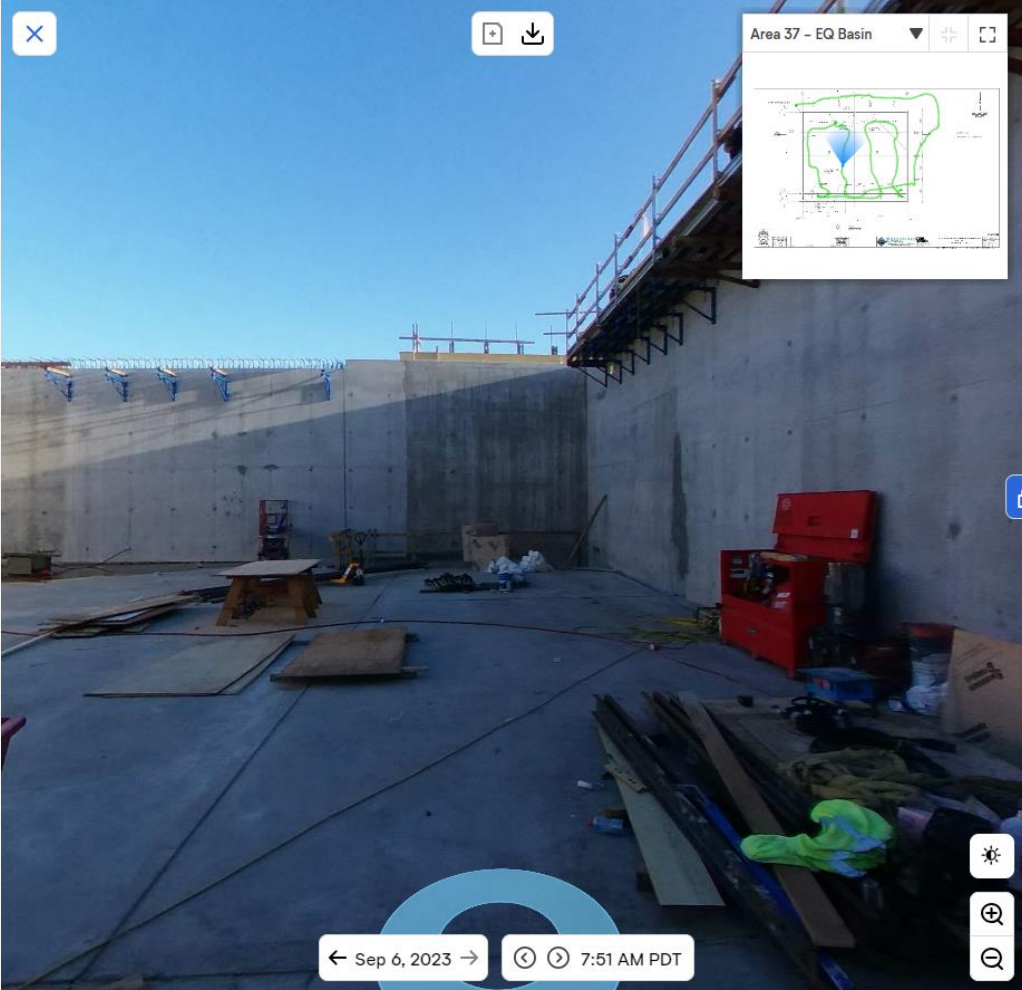
PROBLEM SOLVED



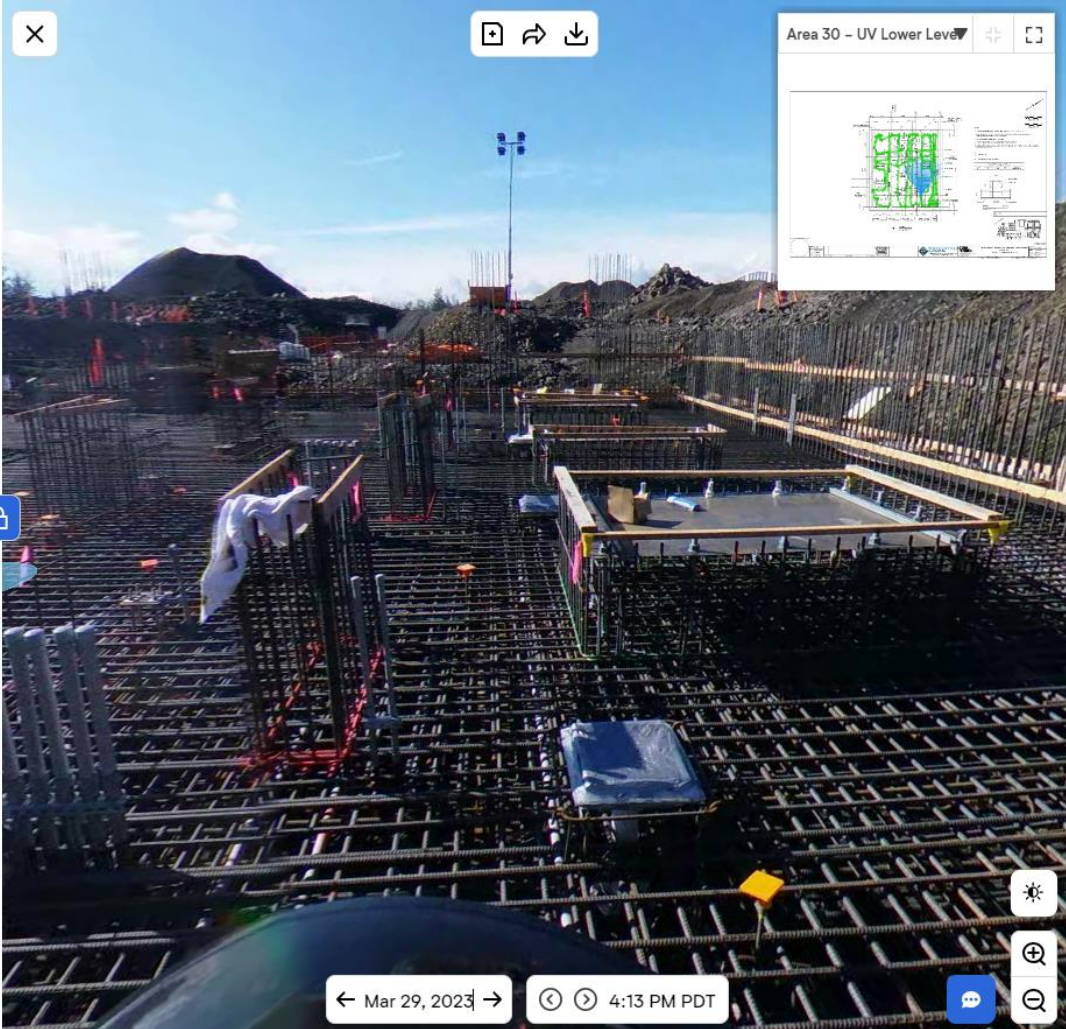
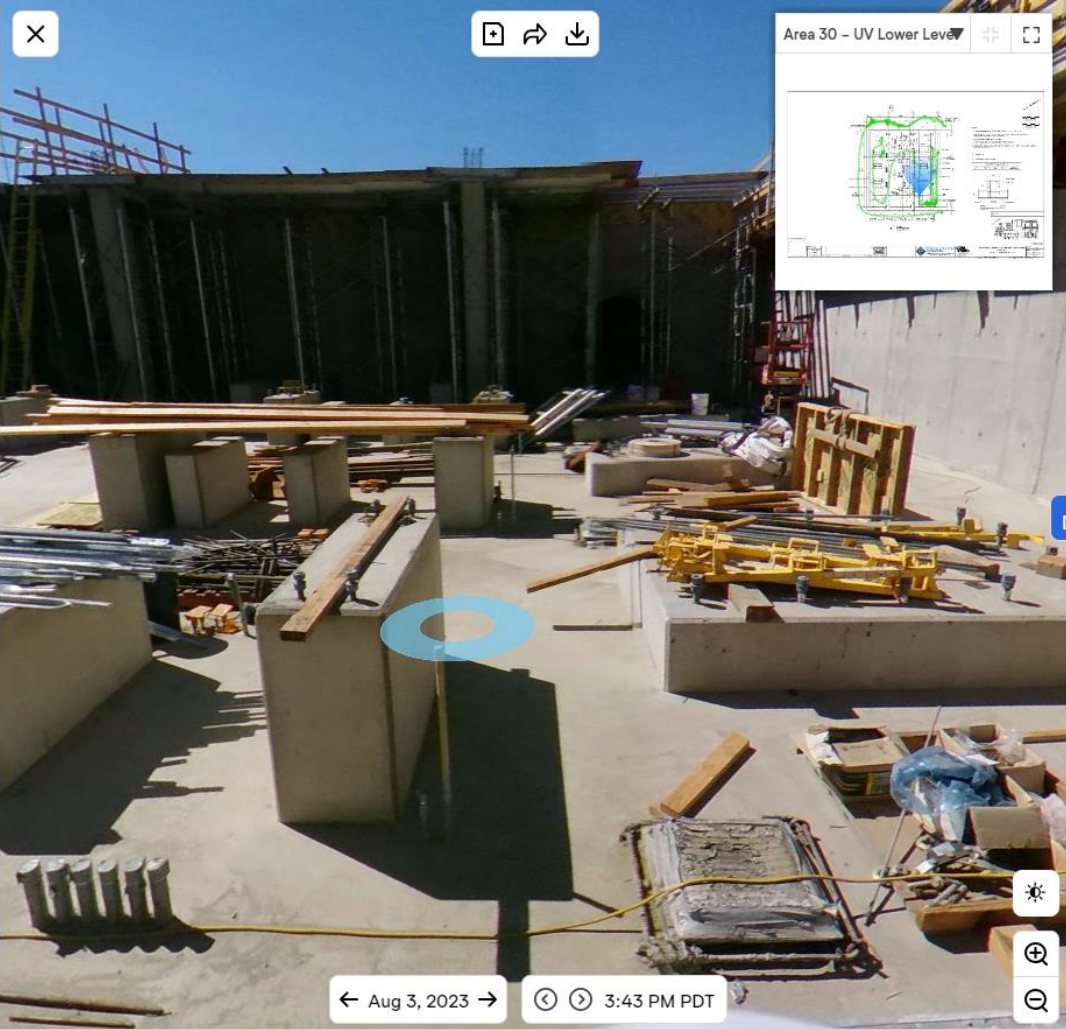
OPENSOURCE



EXAMPLES



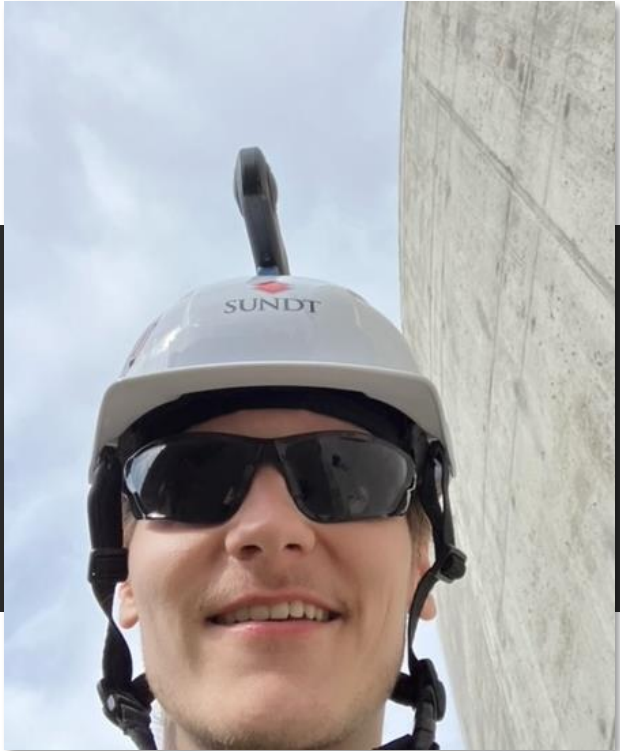
EXAMPLES



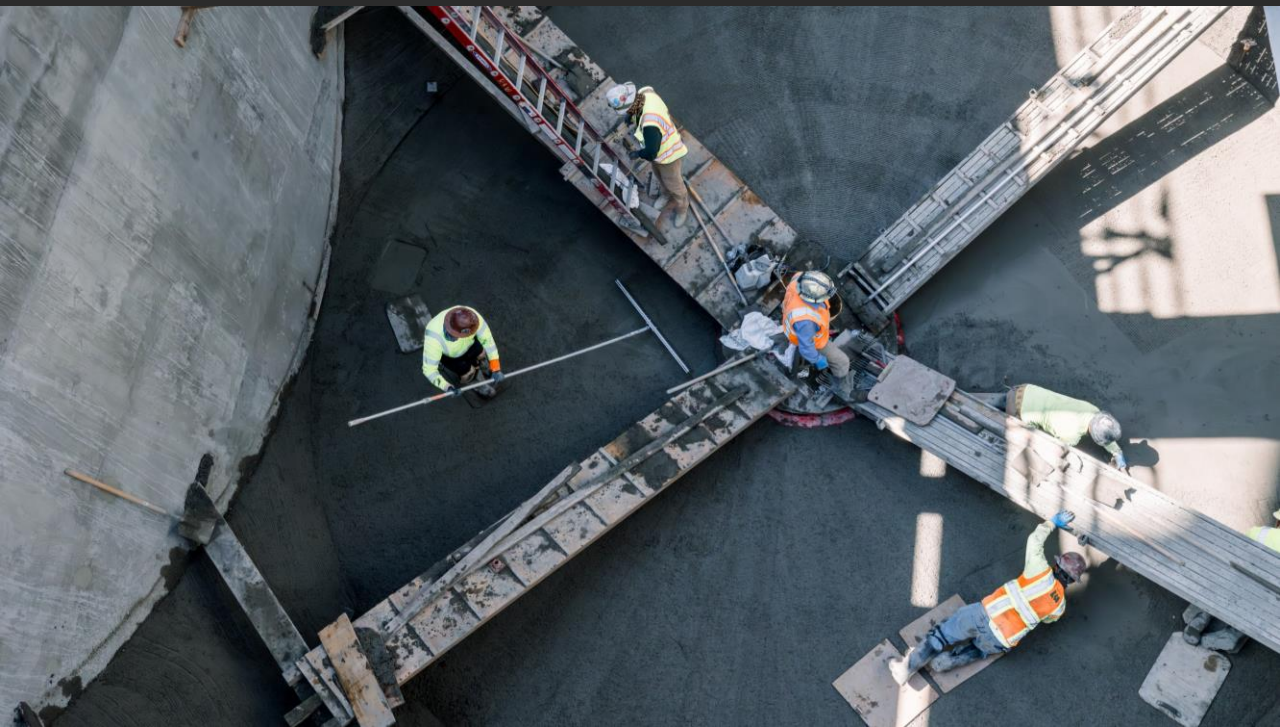
SELECTION PROCESS & ALTERNATIVES



IMPLEMENTATION



BENEFITS & RECAP



- Easily accessible & maneuverable
- Brings value to project
- Offsite coordination / streamlined communication
- Chance to explore new technology



MAKE OR BUY PROGRAM

S

- AIR – Automated Inspection Requests
- Job Badger – Jobsite Security

